



Jewish Foundation  
OF GREATER NEW HAVEN

# 2023 ANNUAL REPORT

J E W I S H F O U N D A T I O N O F G R E A T E R N E W H A V E N

# TABLE OF CONTENTS

Message from our Chair and Executive Director .....	3	Grant Opportunities .....	14
Foundation Programs and Initiatives .....	5	Women of Vision Society .....	16
PACE/LOJE and Beckerman Family Challenge .....	8	Scholarship Opportunities .....	18
Israel Emergency .....	10	Financials .....	25
Create a Jewish Legacy .....	11	Donor Listings .....	31

We are proud to be a resource and partner for our synagogues and agencies, professional advisors, individual donors, families, foundations, and broader community.

We at the Jewish Foundation of Greater New Haven are proud of the work we have done this past year to support our community, both here in the United States and in Israel. We finished off 2023 still reeling from the events of October 7. But while the horror and trauma of that day persists, our community's reaction and actions in support of Israel continue, with the Jewish Foundation partnering with the Jewish Federation to raise monies for the Israel Emergency Campaign and working with our local donors as they respond to needs in Israel. The Jewish Foundation's grant of \$54,000 to the Israel Emergency Campaign has provided crucial humanitarian aid to Israel as they continue to fight the war against Hamas.

The Jewish Federation's Israel Emergency Campaign supports our sister community of Afula-Gilboa as well as collective allocations to Israel, through the Jewish Federations of North America (JFNA) and in partnership with 136 Jewish Federations in the USA and Canada with the monies being sent to date to over 100 NGOs in Israel. *See page 10 for more information.*

In 2023, we began our second, four-year Create a Jewish Legacy New Haven initiative, supported by the Harold Grinspoon Foundation, which partners with 13 of our local organizations through group trainings, resources, and individual consulting to assist them in building their endowments—to date, this has resulted in \$18 million in legacy and planned gifts and \$3.3 million in current gifts. This includes the Beckerman PACE Challenge which has raised over \$4.4 million to date to endow the Jewish Federation's Annual Campaign.

The Jewish Foundation of Greater New Haven distributed over \$4.1 million to charitable organizations in 2023, with 79% directed to local Jewish organizations and synagogues. The Foundation's assets totaled \$73 million, allowing us to partner with our donors and area organizations to fulfill our mission by providing long-term funding for diverse needs within the Jewish community. This substantial impact underscores our dedication to supporting our synagogues, local Jewish organizations, the Jewish Federation of Greater New Haven and various other organizations that form the backbone of our community.

2023 also marked a significant milestone of over \$1 million in security grants, solidifying our commitment to creating a secure environment for our Greater New Haven Jewish community members.

Other grants include \$176,000 allocated to our Jewish elderly grants initiative to benefit members of the actively aging Jewish community, and, on the other side of the age spectrum, \$25,700 distributed in scholarships for Jewish overnight camps, securing our promise of a vibrant Jewish future.

Our commitment to growth and philanthropy is unwavering. We are proud to be a resource and partner for our synagogues and agencies, professional advisors, individual donors, families, foundations, and the broader community. Thank you for considering the Jewish Foundation of Greater New Haven as your partner in planning and as an endowment resource. Together, we look forward to shaping a resilient future and ensuring the lasting strength of our community.



*Signature of Scott Hurwitz*

**SCOTT HURWITZ**  
Board Chair



*Signature of Lisa Stanger*

**LISA STANGER**  
Executive Director



# WHAT WE DO

## MISSION STATEMENT

The Jewish Foundation of Greater New Haven promotes philanthropy with a variety of donors and community organizations to achieve charitable goals and increase current and future support for a vibrant and secure Jewish community.

We do so by providing expert endowment management services and philanthropic advice and education to donors, professional advisors, and organizations. The Jewish Foundation is a supporting organization of the Jewish Federation of Greater New Haven, partnering with the Federation to enrich Jewish life, support Israel, and help all people in need.

## VISION STATEMENT

The Jewish Foundation of Greater New Haven is the permanent charitable endowment for our community. We are the growth strategy for our community and the key to long-term sustainability for our local agencies and synagogues. We grow resources to help build the future and ensure the community's lasting strength.

# FOUNDATION PROGRAMS AND INITIATIVES

## Fund Management and Investment of Synagogue and Agency Custodial Accounts

The Jewish Foundation's professional staff and its centrality to the Jewish Federation ensure continuous, permanent, and secure fund management. This enhances donor confidence and prestige, and it serves to insulate financial management from the vicissitudes of synagogue and agency governance.

Many local not-for-profit organizations have entrusted endowments to the Jewish Foundation for administration and management. These include:

- B'nai B'rith Youth Organization (BBYO)
- Beth Israel Synagogue (Wallingford)
- Camp Laurelwood
- Clifford Beers Institute
- Congregation Beth El-Keser Israel
- Congregation Beth Shalom Rodfe Zedek
- Congregation B'nai Jacob
- Congregation Mishkan Israel
- Congregation Or Shalom
- Ezra Academy
- Hebrew Burial & Free Loan Association
- JCC of Greater New Haven
- JFACT
- Jewish Family Service
- Southern Connecticut Hebrew Academy
- Temple Beth David
- Temple Emanuel
- The Jewish Cemetery Association of Greater New Haven
- The Jewish Historical Society
- The Towers at Tower Lane
- UConn Hillel
- Westville Synagogue

## Donor-Designated Funds for Synagogues and Agencies

The Jewish Foundation works with donors, agencies, and synagogues to solicit and cultivate new restricted endowment funds through current gifts, bequests, trusts, or annuities. For existing funds, the Jewish Foundation provides the donor and the beneficiary organization with quarterly personalized fund reports, provides the beneficiary organization with annual distributions, and works with the beneficiary organization to provide the donor with ongoing stewardship.

The Jewish Foundation also serves as a resource for policies, regulations, and laws pertaining to charitable giving as well as the investment and management of endowment funds.

## Youth Philanthropy and Build a Tzedakah Funds

The Jewish Foundation administers and promotes the Build a Tzedakah (BAT) Fund program, and the program's new branch, My Very Own Tzedakah. Both programs encourage and enable even the youngest children to begin their philanthropic journey early in life.

A fund is created with a donation of \$600. For young adults, this money can come from their bar or bat mitzvah gifts. Then, the donation is matched with \$400 by a generous community donor.

With this, the child/young adult has a \$1,000 named charitable fund at the Jewish Foundation – they, or others, can add to the fund at any time and they will be given the opportunity to choose to which charity(ies) they want to

make a distribution (distributions are based on the Jewish Foundation's spending policy).

## Israel and Overseas Endowment Funds

The Jewish Foundation holds restricted endowment funds that guarantee that the Greater New Haven community will continue to support Israel and Jewish communities in need overseas. These funds make annual distributions to donor-designated charitable organizations that support Israel and Jewish communities in need overseas.

## Scholarships

The Jewish Foundation offers scholarships for college, synagogue schools, Jewish overnight camp, and programs in Israel. *See pages 18-19 for more information.*

## Create a Jewish Legacy

Through Create a Jewish Legacy Greater New Haven, funded in part by the Harold Grinspoon Foundation, the Jewish Foundation provides resources, training, expertise, and incentive grants to our local Jewish organizations and synagogues to assist them in building their endowments and securing legacy gifts. *See pages 11-13 for more information.*

# BUILDING A STRONGER COMMUNITY: DESK, THE SALTZMAN FAMILY FUND, AND THE JEWISH FOUNDATION'S COMMUNITY IMPACT



Since 1987, Downtown Evening Soup Kitchen (DESK) has been a well-known presence in New Haven, offering daily hot meals and a food pantry to those in need. Addressing evolving societal needs, the organization has expanded its focus beyond food assistance, opening a daytime Drop-in & Resource Center to support the houseless people as a place of refuge.

Steve Saltzman, a partner at Brenner, Saltzman & Wallman LLP, witnessed the transformation of DESK over the years. DESK's mission struck a chord with Saltzman, and he felt a responsibility to take action. "It's important that we support the entire community," he emphasized. Guided by this belief, he took meaningful steps to create a long-lasting positive impact.

Enter the Jewish Foundation of Greater New Haven. Saltzman worked directly with Lisa Stanger, Executive Director of the Jewish Foundation, and established an endowment fund to support DESK's efforts and uphold the organization's mission.

"The Saltzman Family Fund, born out of Steve's dedication to his community and philanthropic goals, became a shining example of the Jewish Foundation of Greater New Haven's partnership with donors and community organizations," said Stanger. "With the Jewish Foundation, you can create an endowment to benefit what is important to you. We are thrilled to support DESK with the Saltzman Family Fund and look forward to watching the fulfillment and expansion of DESK's mission."

According to Luis Olmo-Rivera, DESK's Development Director, the Saltzman Family Fund will cover operational expenses for flagship programs like nightly dinners and the Drop-in & Resource Center. However, the intention is to eventually channel these funds toward developing new services that can effectively address the evolving needs of the community they serve. "The Saltzman Family Fund is crucial for ensuring DESK's sustained operational funding, enabling the organization to continue its mission of assisting the most vulnerable in Greater New Haven," says Olmo-Rivera.

The Saltzman Family Fund, DESK, and the Jewish Foundation of Greater New Haven demonstrate the power of collaboration, compassion, and progress. Through transparent communication, endowment expertise, and a commitment to community, dedicated individuals and forward-thinking organizations can shape the future of positive change through impactful philanthropy.

Steve Saltzman has also established endowment funds at the Jewish Foundation for the benefit of the Jewish Cemetery Association of Greater New Haven, the ADL to fund Holocaust Education, Friends of Jewish Heritage Poland, a PACE Fund (Perpetual Annual Campaign Endowment) for the Jewish Federation Annual Campaign, a donor-advised fund, as well as a LOJE (Lion of Judah Endowment) Fund in memory of his late wife, Marilyn, to endow her Lion of Judah gift to the Jewish Federation Annual Campaign.

To learn more about DESK, visit [deskct.org](http://deskct.org). To learn more about helping our community visit [newhavenjewishfoundation.org](http://newhavenjewishfoundation.org) or by scanning the QR code.



# STRENGTHENING THE SHIELD: CELEBRATING A MILLION DOLLARS FOR JEWISH SECURITY

In memory of Arthur and Yvette Eder, the Arthur F. Eder Family Fund, as part of the Jewish Foundation of Greater New Haven, is dedicated to safeguarding the Greater New Haven Jewish community by granting Security Grants to local Jewish institutions. Since 2019, this fund has provided grants totaling over \$1 million to 25 synagogues, Chabad centers, schools, and camps.

Now in its fifth year, the Security Grant Initiative faces its most critical moment yet, driven by the ongoing Israel-Hamas War, and an alarming and unprecedented surge in antisemitism. While safety of the Greater New Haven Jewish community has always been a priority for the Jewish Foundation, it is now at its most critical.

Grant monies have been used towards security infrastructure improvements such as cameras, alarm systems, reinforced doors, bullet proofing glass, and armed guards, among other security measures. One notable recipient was the JCC's Beckerman-Lender Community Building, which hosts 20,000 visitors each month. With this funding, the JCC has implemented state-of-the-art security protocols: an inviting welcome desk with intruder-resistant glass, integrated card scanners, and other undisclosed measures.

"With the Jewish Foundation's grant, we have not only enhanced physical security but also created an environment where individuals can feel at ease," said JCC Executive Director, Scott Cohen. "These funds allow us to focus on the well-being of our members, as a place for all to engage, connect, and flourish."

Temple Beth Sholom has received numerous grants over the past four years. "The grant's support has played a pivotal role in our ability to swiftly enhance security measures. Our congregants now experience a heightened sense of safety and security with visible guards during services, events, and Hebrew school. This not only bolsters our physical security, but fosters a stronger sense of community and trust among our members," said Temple Beth Sholom's Safety & Security Chairperson, Morrow Long, and Lauren Piscitelle, President.

These grants have enabled the community to work together as a united front. "This grant initiative highlights the incredible things that can be achieved when community organizations work together," said Lisa Stanger, Executive Director, the Jewish Foundation of Greater New Haven. "It strengthens the Jewish union, secures an environment that keeps the Greater New Haven community safe, and positively impacts the lives of all."

The dedication of the Arthur F. Feder Family Fund to enhancing security measures extends its support to various Jewish institutions, ensuring the safety and well-being of the entire community. With applications for the 2024 grant cycle available online, the Jewish Foundation of Greater New Haven remains resolute in their commitment to this ongoing mission of safety and security for all.

Local Jewish institutions are highly encouraged to apply for grants at [newhavenjewishfoundation.org/security](http://newhavenjewishfoundation.org/security) or by scanning the QR code.

The 2024 grant cycle will remain open until November 13, 2024.



The grant's support played a pivotal role in our ability to swiftly enhance security measures. Our congregants now experience a heightened sense of safety and security with visible guards during services, events, and Hebrew School. This not only bolsters our physical security but fosters a stronger sense of community and trust among our members.

-Temple Beth Sholom's Safety & Security Chairperson, Morrow Long, and Lauren Piscitelle, President



# PACE/LOJE FUNDS

How can you provide for Jewish education, camps, schools, the frail elderly, those in need, the JCC, and for Jews in need abroad and in Israel? With your annual gift to the Jewish Federation of Greater New Haven.

How can you ensure your legacy will last for future generations of Jews in Greater New Haven and throughout the world? By establishing a PACE or LOJE fund for the benefit of the Jewish Federation's Annual Campaign.

A Perpetual Annual Campaign Endowment (PACE) is a permanent fund endowing your Annual Campaign gift. Through their Lion of Judah Endowment (LOJE), women strengthen the Jewish community by providing funds to meet needs at home, in Israel, and around the world.

Your PACE or LOJE fund continues your legacy to our community. Your fund will continue from your generation to the next by distributing funds to our local Federation Annual Campaign that provides for our community – in Greater New Haven, Israel, and worldwide.

PACE funds make an impact – this year, \$566,000 will be distributed to the Annual Campaign from PACE/LOJE funds.

Your Jewish legacy can be created during your lifetime with cash, stock, or retirement assets. You can also make a current commitment to establish or add to your fund through your estate, life insurance, or retirement assets.

In 2008, there was \$1.2 million in PACE and LOJE funds. Today, there is over \$17 million, and in addition, there is another \$2 million in commitments to PACE and LOJE!

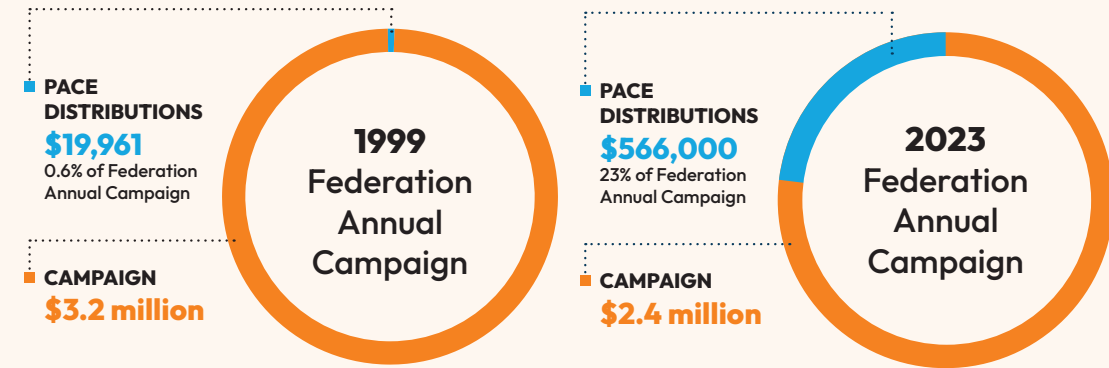
Consider endowing your annual gift to the Jewish Federation of Greater New Haven's Annual Campaign. To see a listing of community members who, through current and planned gifts of cash, insurance, and bequests, have established PACE and LOJE funds, see page 9.

Learn more about PACE/LOJE funds by visiting [newhavenjewishfoundation.org/pace-loje](http://newhavenjewishfoundation.org/pace-loje) or by scanning the QR code.



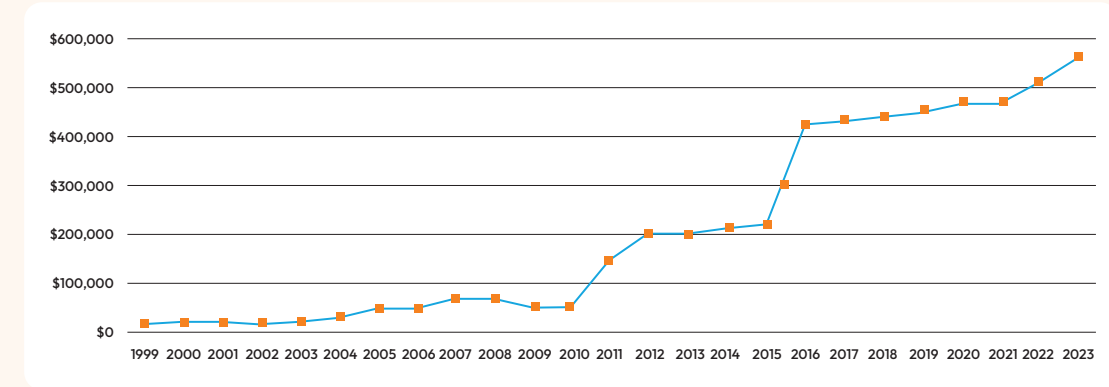
## PACE/LOJE DISTRIBUTIONS TO THE JEWISH FEDERATION ANNUAL CAMPAIGN

PACE funds have grown significantly over the years. In 1999, they were just **0.6%** of Federation Annual Campaign donations. In **2023**, they account for **over 23%**.



How important are the annual distributions from the PACE/LOJE funds to the Federation's Annual Campaign? Let's take a look:

## PACE/LOJE DISTRIBUTIONS TO THE JEWISH FEDERATION ANNUAL CAMPAIGN 1999-2023



## BECKERMAN FAMILY PACE CAMPAIGN

The Beckerman PACE/LOJE campaign has successfully reached 89% of its new \$5 million target, with **\$4,462,533 raised to date** and **57 donors contributing**. This includes a \$2 million Beckerman Family Match.



Established in partnership with the Beckerman Family Foundation, PACE is now a \$5 million community campaign. \$4,462,533 has been raised to date and we have met our goal for the \$2 million Beckerman Family PACE Challenge match. This campaign is intended to secure the future of the Greater New Haven Jewish community through newly established and increased PACE funds.

Thank you to the families listed below for helping us successfully complete our challenge. If you would like to join them in helping us reach (and surpass!) our \$5 million goal, contact List Stanger at [lstanger@jewishnewhaven.org](mailto:lstanger@jewishnewhaven.org).

### Current PACE Challenge Donors (as of 1/30/24)

- Norman & Caron Alderman\*\*
- Richard Amerling\*\*
- David & Karen Astrachan\*
- Rosalind & Stephen Atkins\*
- Steve & Judy August\*
- Gerry & Debbi Barker\*
- Brad Beckerman\*\*
- Linda & Leonard Bell\*

- Harvey Bixon\*
- Rob & Stacey Bland\*
- Leatrice Brodner\*
- Jay & Lynn Brotman\*
- Mark & Linda Caplan\*
- Nancy Cohen\*
- Rhoda Cohen\*
- Michael & Karen Diamond\*\*
- Jody Ellant\*\*
- Rick & Debra Epstein\*
- Ronald Farber Memorial PACE Fund\*
- Dale & Robert Felice\*\*
- Marilyn Fishbone\*
- Adam Fleischman\*
- Andrea & Steven Fleischman\*
- Julie Fleischman\*
- Samantha Fleischman\*
- Zoe Fleischman\*
- Claire Frankel\*\*
- Kal Watsky & Deborah Fried\*\*

- Suzanne Gallant\*\*
- Gary & Patricia Ginsberg\*
- Dena Schulman-Green & Eric Green\*\*
- Judith Hahn\*\*
- Betsy & Jeffrey Hoos\*\*
- Heidi Hurwitz\*
- Scott & Jocelyn Hurwitz\*\*
- Bruce & Irene Jacobs\*
- Cari & Keith Kaplan\*\*
- Joel & Iny Karp\*\*
- Elliott Kerzner Memorial PACE Fund\*
- Ed Konowitz\*
- Jackie Koral\*
- George & Susan Krall\*\*
- Barbara & John Lichtman\*\*
- Bill Loftus\*
- Joan & Stuart Margolis\*
- Lisa Martin\*\*
- Marc & Nancy Olins\*\*

- Barbara Green Orell\*
- Hap & Stacey Perkins\*\*
- Jodi & Richard Pollack\*\*
- Paul & Rita Portnoy\*
- Eric Ravid\*\*
- Norman & Karyn Ravski\*
- Stephen Saltzman\*\*
- Shirley Scholder\*\*
- Jimmy Shure\*\*
- Colby & David Sirowich\*
- Susan & Doug Skalka\*
- Mark & Judy Sklarz\*\*
- Ina Silverman & Jay Sokolow\*
- Emily Fine & Stephen Stein\*
- Jeffrey & Robyn Teplitzky\*
- Barry & Hyla Vine\*\*

\*= New fund established

\*\*= Added funds to existing PACE/LOJE

# JEWISH FOUNDATION OF GREATER NEW HAVEN TAKES SWIFT ACTION IN RESPONSE TO HAMAS ATTACKS



On October 7, 2023, a horrendous and devastating attack occurred when Hamas targeted Israel. This event was of unprecedented magnitude; one that the Jewish people had not witnessed in 50 years since the Yom Kippur War of 1973 and with more Jewish deaths in one day than in any day since the Holocaust.

As people across the world grieved, the Jewish Federation of Greater New Haven launched an Israel Emergency Campaign to provide for immediate humanitarian needs in Israel. The campaign is part of a \$620 million+ national campaign including all the Jewish Federations in the US and Canada. New Haven has reached an impressive \$1.6 million of our \$1.8 million goal. Yet, so much remains to be done.

With a mission as a supporting organization of the Jewish Federation of Greater New Haven, partnering with the Federation to enrich Jewish life, support Israel, and help all people in need, the Jewish Foundation of Greater New Haven took immediate action by reaching out to donors, promoting on social media, launching Google ads, and promptly compiling a comprehensive list of resources and philanthropic ideas to encourage support.

“The Jewish Foundation’s response reflects our unwavering commitment to stand with Israel during times of crisis,” said the Jewish Foundation’s Executive Director, Lisa Stanger. “The Jewish Foundation of Greater New Haven is dedicated to providing not only financial support to

the Jewish Federation of Greater New Haven’s Israel Emergency Campaign, but also valuable resources to aid those affected by the recent attacks.”

*The Jewish Foundation’s Board Chair, Scott Hurwitz, added, “In times of adversity, our community comes together to support one another. The collaborative efforts between the Foundation, the Federation, our donors, and many other committed organizations, exemplify the strength of unity and solidarity within the Greater New Haven Jewish Community.”*

As of the end of 2023, the Israel Emergency Campaign has provided for the most pressing needs on the ground through nearly 300 partner organizations and NGOs. Organizations that have received funds include the Jewish Agency for Israel, JDC, World ORT, Israel Trauma Coalition, United Hatzalah, Magen David Adom, ZAKA, Chabad, and over a dozen hospitals and medical organizations.

Below are some of the focus areas Jewish Federation funds have gone to in recent months:

- **Basic Needs:** Providing food and financial assistance for impacted families, the elderly, and the homebound.
- **Evacuation, Housing, Respite, and Support for Frontline Communities:** Supporting communities under fire and new olim through evacuations, temporary housing, respite trips, children’s activities, and increased security.
- **Fund for Victims of Terror:** Offering immediate cash grants to families and individuals impacted by acts of terror and violence.

- **Trauma Relief and Psychosocial Care:** Supporting widescale trauma relief and psychosocial support, including telephone hotlines and direct care for first responders, Lone Soldiers, and affected families.
- **Emergency Medical Services and Healthcare:** Providing medical supplies and equipment for first responders and hospitals near the front line.
- **Special Populations:** Targeted assistance to vulnerable populations, including the elderly, young children, people with disabilities, Bedouin communities, and other marginalized communities.
- **Pastoral Guidance and Rabbinic Services:** The magnitude of the tragedy on October 7 has required a rapid expansion of rabbinic services connected to death, mourning, and spiritual guidance for the bereaved.
- **Local Efforts and Volunteers:** Enhancing capacity and operational support for evacuees, special populations, frontline communities, and crisis responders.

In addition, a special grant was made to our sister community in Afula-Gilboa for additional security infrastructure.

As the Jewish Foundation continues its commitment to supporting Israel during these challenging times, our community’s generosity remains crucial.

To donate visit [newhavenjewishfoundation.org/crisis-in-israel](http://newhavenjewishfoundation.org/crisis-in-israel) or scan the QR code.



# JEWISH FOUNDATION KICKS OFF SECOND CREATE A JEWISH LEGACY INITIATIVE



In 2012, the Greater New Haven Create a Jewish Legacy (CJL) initiative was launched in partnership with the Harold Grinspoon Foundation. This initiative assists our local Jewish organizations and synagogues to cultivate, solicit, and steward endowments and planned gifts.

As a nationally recognized program, the Grinspoon Foundation’s LIFE & LEGACY™ initiative has made a significant impact in the past decade, engaging 30,000 donors across 75 communities, with \$1.6 billion in legacy commitments and \$234 million secured.

Locally, the 2012 CJL initiative resulted in \$8.1 million in legacy commitments for our participating Jewish organizations and synagogues. Fast forward to 2023, the CJL initiative was relaunched as a 4-year program with new and returning organizations. New manager, Tamara Schechter, gives the initiative renewed vigor and purpose, with an ongoing commitment to preserving and strengthening our Jewish heritage in the community.

As the numbers reveal, 2023 yielded remarkable results! We partnered with 13 local Jewish organizations, many of whom exceeded their first-year goals of a four-year plan. Legacy team members received 150 letters of intent, with \$9.9 million in legacy commitments secured. The 247 donor conversations recorded reflect the vibrant engagement and active participation of our community members.

These commitments are a testament to the enduring legacy that we are building together – one that will sustain and enrich the Jewish community for generations to come.

As we reflect with gratitude on the successes of this past year, we look with optimism toward Years 2-4 of the program. Create a Jewish Legacy Greater New Haven is more than just numbers; it is a promise for growth and long-term sustainability to our local agencies, organizations, and synagogues. The Jewish Foundation of Greater New Haven remains committed to preserving, strengthening, and celebrating our Jewish identity, ensuring that our legacy endures for generations to come.

## Participating Organizations



### LIFE & LEGACY™ National Program 2012-present

- \$1.6 billion in legacy commitments
- \$234 million secured
- 40,680 letters of intent
- 75 communities
- 898 participating organizations



### Create a Jewish Legacy Greater New Haven 2012-2022

- \$8.1 million in legacy commitments
- 375 letters of intent
- 600 donor conversations
- 12 participating organizations
- \$300,000 in incentive grants from the Jewish Foundation



### Create a Jewish Legacy Greater New Haven 2023 YEAR 1!

- \$9.9 million in legacy commitments
- 150 letters of intent
- 247 donor conversations
- 13 participating organizations
- \$28,000 in incentive grants from the Jewish Foundation



# LEGACY SPOTLIGHTS

## JUDY AND MARK SKLARZ

**ESTABLISHED AN ENDOWMENT FOR THEIR FAMILY'S SYNAGOGUE, CONGREGATION MISHKAN ISRAEL**

*To commemorate their first year of marriage, Mark Sklarz gave his wife, Judy, stock certificates. After all, it was the paper anniversary. Years later, that gesture of love would transform into a gift from the couple to their beloved synagogue. Over time, the stock certificates appreciated significantly, but the Sklarzes never sold them. Instead they used their good fortune to establish the **Sklarz Family Fund for the Rabbi Herbert N. Brockman Rabbinic Endowment**, a permanent endowment for the benefit of their synagogue, Congregation Mishkan Israel in Hamden, and to honor the remarkable work and cherished leadership of their revered Rabbi.*

## LEE AND PETER STOLZMAN

**CREATED A LEGACY FOR THEIR SYNAGOGUE, TEMPLE EMANUEL**

*"Three generations at Temple Emanuel and five B'nai Mitzvot. From generation to generation. That is why it is important for us to be part of the Temple Emanuel Leave a Legacy initiative." —Lee and Peter*

## JESSEY AND JOE PALUMBO

**CREATED A LEGACY FOR THEIR SYNAGOGUE, CONGREGATION BETH EL-KESER ISRAEL**

*"We love that BEKI is a warm and inclusive egalitarian community. In 1997, our interfaith family joined BEKI, where we were welcomed and educated, and our sons celebrated their B'nai Mitzvah. I am honored to leave a legacy in my will for the following generations to also grow and learn with the BEKI community." —Jessey*

## JACKIE KORAL

**CREATED A LEGACY FOR THE TOWERS AT TOWER LANE**

*"My very special mother-in-law, born in Vienna, was unable to escape Europe during the Holocaust. She and my father-in-law came to the United States in 1949. At 95, my husband and I brought her from Manhattan to The Towers. She was terrified. "I don't know anyone there," she said, "and I speak English with a funny accent." But her fears were soon overcome as she was embraced by the residents and the staff of The Towers where she lived until her death five years later. She is the one who insisted I get involved with The Towers because she loved it so much, and I did. It is in her memory and the memory of her husband and mine, that I created an endowed fund at the Jewish Foundation. Through this fund, their memories will always live on in perpetuity." —Jackie*

*What Will Your Legacy Be?*

Learn more and create your Jewish legacy by visiting [newhavenjewishfoundation.org/create-a-jewish-legacy](https://newhavenjewishfoundation.org/create-a-jewish-legacy) or by scanning the QR code.



# GRANT FUNDS

## The Maimonides and Devorah Funds

The Maimonides and Devorah Funds at the Jewish Foundation continue to provide anonymous financial assistance for emergencies and/or medical needs, as requested by our rabbis, Jewish Family Service, and other referring agencies.

Both funds were established to follow the precepts of Rabbi Moshe Ben Maimon (better known as Maimonides), who, in defining levels of tzedakah (charity), deemed one of the highest levels to be matan b'seter (giving in secret). This is when the benefactor has no knowledge of the recipient, and the latter has no knowledge of the donor.

## Women of Vision Society Endowment Fund

In 1996, The Women of Vision Society at the Jewish Foundation was created to ensure that a permanent, restricted endowment fund would be available to enhance the quality of life for future generations of Jewish women and their families in Greater New Haven, in Israel, and around the world.

The society was created by 100 women who each contributed a minimum of \$1,000 to establish the original endowment. Annual grants have been made from this fund since 1998. In 2002, Women of Vision Society Too was launched to allow additional members of the community the opportunity to participate.

Each year, the Women of Vision Grants Committee makes awards that are funded from the Women of Vision Society endowment. Since 1998, over \$236,000 has been awarded for programs and projects of concern to Jewish women.

## Professional Development Grants

Thanks to the Judith A. Kaye Fund for Teachers in Jewish Education and the Community Education Funds, the Jewish Foundation is thrilled to offer professional development grants for Jewish educators.

These grants help ensure that classroom educators in local Jewish schools can attend workshops and conferences to develop their teaching skills. The grants help local Jewish organizations provide educational opportunities to instructors and the community.

Applicants must be either a) classroom educators employed in Jewish education in a local Jewish school or synagogue or b) a local Jewish school or synagogue. Eligible programs must be hosted by a recognized Jewish institution or reputable educational institution.

## Security Grants Initiative

Thanks to the Arthur Eder Family Fund, in memory of Arthur & Yvette Eder, over \$1,000,000 in security grants has been awarded to 25 synagogues, Chabad centers, schools, and camps.

Learn more and apply for a grant today at [newhavenjewishfoundation.org/grants](https://newhavenjewishfoundation.org/grants) or by scanning the QR code.



## \$1 MILLION IN SECURITY GRANTS AWARDED SINCE 2019 PAST GRANT AWARDEES

- Camp Gan Israel
- Camp Laurelwood
- Chabad of Hamden
- Chabad of the Shoreline
- Chabad of Wallingford
- Congregation BEKI
- Congregation Beth Shalom Rodfe Zedek
- Congregation B'nai Jacob
- Congregation Mishkan Israel
- Congregation Or Shalom
- Ezra Academy
- Hebrew Congregation of Woodmont
- JCC of Greater New Haven
- Orchard Street Shul
- Slifka Center for Jewish Life at Yale
- Southern Connecticut Hebrew Academy
- Temple Beth David
- Temple Beth Sholom
- Temple Beth Tikvah
- Temple Emanuel
- The Israeli Jewish Center
- Westville Synagogue

Applications for 2024 are being accepted on a rolling basis until November 13, 2024. This will be an annual process until the fund is exhausted.

## Community Grants for the Jewish Elderly

These grants benefit innovative and new programs and projects for Jewish elderly currently residing in Greater New Haven. In 2023, \$176,000 was granted by the Jewish Foundation's Jewish Elderly Grants Committee to enrich the lives of the Jewish Active Aging population in Greater New Haven. Grants were awarded to the following programs:

**The Care Navigators Program at Jewish Family Service**, which focuses on ensuring secure housing, enhancing well-being, fostering community cohesion, promoting independence, and enriching the lives of aging adults.

**The Towers at Tower Lane** will utilize the Jewish Foundation's support to establish a transformative Community Garden, contributing to inclusivity and overall well-being. This initiative's impact will extend beyond landscape rejuvenation, reaching into local schools, camps, and involving volunteers. It will provide a space for shared learning and community.

**Chabad of the Shoreline** was awarded a grant for its 'Friendly Visitors' initiative, which matches volunteers with Jewish seniors in nursing homes and assisted living. This program serves the dual purpose of countering isolation through joyful and regular visits, while also nurturing intergenerational Jewish projects that contribute to enriching experiences.

Since 2020, \$620,000 has been awarded for the Jewish elderly from this initiative.



# WOMEN OF VISION & WOMEN OF VISION TOO



The WOV Society awarded grants to seven programs in 2023, focusing on enhancing the well-being, education, and support networks of Jewish women through various initiatives. These programs aim to empower and support women in the Jewish community, addressing diverse needs such as menstrual hygiene, support for female ultra-Orthodox Lone Soldiers, access to higher education, Intergenerational Jewish programs, leadership development for girls, community-building for young Israel Defense Forces (IDF) widows, and fostering a robust Jewish community.

## 2023 WOMEN OF VISION GRANT RECIPIENTS

### Dignity Grows

Jewish Federation of Greater New Haven

Dignity Grows mobilizes volunteers to assemble and distribute free, reusable totes filled with a month's supply of basic menstrual and hygiene products. This program partners with local organizations, like Jewish Family Service and the Diaper Bank, to distribute supplies to the women who need them.

### Female Haredi Lone Soldier Project

Yashar LaChayal

Yashar LaChayal launched this initiative in 2019 to support female ultra-Orthodox lone soldiers in the IDF. These young women aren't supported by their families due to their decision to serve in the IDF. The Lone Soldier Project provides them with housing and a support system during and after their service.

### Aim Higher: The Feuerstein Academic Integration Program for Young Women from the Ultra-Orthodox Community

The Feuerstein Institute

Aim Higher assists ultra-Orthodox women to access higher education. It equips students with cognitive, social, and academic resources to ensure the successful completion of their degrees. Beyond university, the aim is to encourage career specialization and economic security.

### Adopt A Bubbe: An Intergenerational Jewish Program for Women and Girls

The Towers at Tower Lane

This is a project in collaboration with Southern CT Hebrew Academy and Bais Chana Academy. This monthly program pairs female elementary and high school students with female residents at The Towers who are interested and in need of meaningful social connection and engagement. Each session will focus on a Jewish holiday or theme. Fun, achievable, and meaningful activities will provide the setting for friendships, mentorship, and reduction of isolation. Each session will include some education appropriate for both seniors and participating students.

### Empowering BBG\* Leaders at Convention

B'nai B'rith Youth Organization

The purpose of this program is to provide specific programming for girls at the BBYO convention. This will include mental health and wellness, transferable leadership skills, and programs designed to build inclusive communities. This will also build a positive culture of sisterhood within convention participants, and encourage healthy relationships. \*B'nai B'rith Girls

### Elm City Kallah Scholar-In-Residence

Elm City Kallah

Elm City Kallah is a multi-shul collaboration. The event took place in October 2023 at Congregation BEKI, Congregation B'nai Jacob, and Westville Synagogue, and featured Rory Picker Neiss. The event was open to Jews of all backgrounds and traditions. The participants were invited to pray, sing, eat, and study at each synagogue with the goal of building bridges among women of various traditions and fostering a robust Jewish community.

### Community Building for Young IDF Widows

IDF Widows and Orphans Organization (IDFWO)

Through specifically designed programs, this initiative aims to establish a strong community for widows of IDF soldiers and members of the Israeli security forces with children age 21 and younger. This initiative will work to encourage personal growth through a variety of enriching activities to bring this vulnerable community together and empower them to support themselves.



WOV Society packs Dignity Grows bags

# WOMEN OF VISION SPOTLIGHT: ADOPT A BUBBE PROGRAM

The WOV Society was proud to fund a grant that played a pivotal role in bridging the intergenerational gap for Jewish seniors at The Towers at Tower Lane. Developed in collaboration with the Southern CT Hebrew Academy and Bais Chana Academy, the Adopt a Bubbe program aims to foster meaningful social connections and engagement between female elementary and high school students and female residents at The Towers, promoting companionship, engagement, and learning between the two generations.



The Adopt a Bubbe program, funded by the WOV Society, served as a perfect catalyst to bridge the gap between generations and fulfill both missions, by establishing a sustainable and impactful intergenerational initiative addressing the needs of female Jewish seniors in the community.

The program facilitates the creation of genuine connections, mentorship opportunities, and educational experiences between younger generations and Jewish seniors, and also addresses the feelings of isolation often experienced by seniors.

Education plays a significant role in the program with each session focusing on a Jewish holiday or theme that was relevant to both age groups. By sharing their knowledge and experiences, the senior residents at The Towers offer wisdom and cultural insights to the younger generation, while the students share fresh perspectives and youthful energy to each topic.

One Towers resident, Lil Liberman, was one of the program participants. "This program made me so happy. Today was one of the best days I've had in a long time", she said. "There was so much warmth and love in that room. And to think that this lovely little girl is actually related to my family! We call that b'shert that we were paired together. It was a perfect afternoon!"

WOV demonstrates their commitment to fostering lasting connections and enhancing the lives of Jewish women of all generations. This grant impacts Jewish education and Jewish seniors through community engagement, by enriching the lives of students and the senior residents at The Towers, and by promoting a stronger, more interconnected Jewish community.

To learn more about grants offered through the Jewish Foundation of Greater New Haven, please visit [newhavenjewishfoundation.org/women-of-vision](https://newhavenjewishfoundation.org/women-of-vision) or scan the QR code.



This program made me so happy. Today was one of the best days I've had in a long time...  
- Lil Liberman, Towers Resident

# SCHOLARSHIP OPPORTUNITIES



Saana Mohammed, scholarship recipient

## COLLEGE SCHOLARSHIPS

### Mary Taylor Friedler Memorial Scholarship Fund

This fund was established in 1991 with an initial gift from Saul Friedler in memory of his wife to provide a college scholarship to a Jewish high school senior from Greater New Haven. The scholarship requires an essay concerning what peace, justice, and righteousness mean to you and your Judaism.

Awards average \$500 and are based on the strength of the essay.

### Stuart J. Drell Scholarship Fund

The Stuart J. Drell Scholarship Fund was established in 2001 at Congregation Beth Israel in Scotch Plains, New Jersey. When Renee Drell relocated to Connecticut, she transferred the fund to the Jewish Foundation of Greater New Haven, and it now awards college scholarships to high school seniors as well as current college students. Awards are \$1,500 and applicants must be from a Jewish household in Connecticut.

Awards are based on the strength of the application (which requires an essay) and financial need.

### Emma Kohn Podoloff Scholarship Fund of the National Council of Jewish Women's Greater New Haven Section

The Emma Kohn Podoloff Scholarship Fund of the National Council of Jewish Women's Greater New Haven Section at the Jewish Foundation sponsors scholarships to advance the scholastic and vocational education of Jewish high school seniors from Greater New Haven. An academic average of "B" or better and verified financial need qualifies a student to be considered.

Awards average \$1,500. The application includes an essay and two recommendations. Awards are based on the strength of the application and financial need.

## SYNAGOGUE SCHOOL SCHOLARSHIPS

Through the generosity of an anonymous donor in our community, this initiative provides needs-based assistance for New Haven-area synagogue schools. Assistance from this initiative supplements other scholarships.

The deadline for the online application is October 2, 2024. Awards are based on financial need.

## ONE HAPPY CAMPER NEW HAVEN

**Needs-Blind:** The Jewish Foundation, in partnership with the One Happy Camper program of the Foundation for Jewish Camp, as well as an anonymous donor, is thrilled to offer needs-blind grants of \$375-\$1,000 for first-time campers from Greater New Haven to attend any one of over 200 traditional and specialty Jewish overnight camps nationwide.

**Needs-Based:** The Jewish Foundation, in partnership with an anonymous donor, is thrilled to offer needs-based financial assistance for campers from Greater New Haven to attend Jewish overnight camps nationwide.

## ISRAEL EXPERIENCE SCHOLARSHIPS

The Jewish Foundation Israel Experience Scholarship Program provides local Jewish students ages 14-20 the opportunity to participate in an Israel experience to develop and enrich their Jewish education and reinforce their Jewish identity.

The Jewish Foundation provides scholarships for both short-term (minimum of three-week program) and long-term organized Israel educational programs.

An essay and two recommendations are required. All applications are confidential and anonymously reviewed by the Israel Experience Scholarship committee.

### Scholarships Funds for Youth Israel Experiences

- The Earl and Muriel Banquer Israel Endowment Fund
- Bloch Family Fund for Israel Travel by Congregation Or Shalom Youth
- Esther Gold Milikowsky-Copelon Fund in memory of Matthew Milikowsky for Teen Travel to Israel
- Marvin S. Pisetsky Israel Scholarship Endowment Fund
- Henry & Helene Kasha Fund for the Teaching of the Hebrew Language
- Arthur Spiegel Israel Scholarship Fund
- Lawrence & Florence Winer Israel Scholarship Fund

Visit [newhavenjewishfoundation.org/scholarships](https://newhavenjewishfoundation.org/scholarships) for more information, a list of qualifying programs, and application requirements. Or, scan the QR code.



Solomon Gholian with Friends during Summer Israel Experience

# 2023 SCHOLARSHIP RECIPIENTS

## Emma Kohn Podoloff Scholarship Recipients:

- Noah Brown
- Jacob Bettencourt
- Sophia McDermott

## Stuart J. Drell Scholarship Recipients:

- Jacob Bettencourt
- Elijah Harris
- Myles Kaplan

## Israel Summer Experience Scholarship Recipients:

- Haily Weissman
- Solomon Gholian

## Gap Year Israel Experience Scholarship Recipients:

- Yarden Pawlak
- Chaya Drizin

## Mary Taylor Friedler Scholarship Recipient:

- Harrison Ross Rosenay



**YARDEN PAWLAK**

### GAP YEAR ISRAEL EXPERIENCE SCHOLARSHIP RECIPIENT

*“As a result of the Foundation’s generosity, I was inspired to give back to the community, ensuring that others also have the chance to grow and contribute. I had an incredible and fulfilling experience volunteering at Cafe J this summer, at the JCC. The time I have spent at Cafe J has been eye-opening and enriching in ways I could never have imagined. Working with the interns from Chapel Haven taught me valuable life lessons and the power of human connection. I am thankful for the chance to make a positive impact on our community, and I owe a significant part of this opportunity to the Jewish Foundation of Greater New Haven’s Israel Experience Scholarship for my gap year scholarship that supported me so that I may enrich my education in Israel. I will remember this summer and the lessons of gratitude and service for the rest of my life.” —Yarden Pawlak*



**MYLES KAPLAN**

### STUART J. DRELL SCHOLARSHIP RECIPIENT

*“I wanted to take the time to say thank you for this opportunity. I am beyond words excited for this semester, as this scholarship opens so many doors for me. The ability to study is something so dear to me, and you have made it possible. My family and I cannot thank you enough. You have done a great mitzvah and I can only hope that one day I can pay it forward.” —Myles Kaplan*



**ELIJAH HARRIS**

### STUART J. DRELL SCHOLARSHIP RECIPIENT

*Dear Drell Family,  
Thank you so much for selecting me as a recipient of the Stuart J. Drell Scholarship. Your support means that I can continue my pursuits of higher education in hopes of becoming a lawyer working in the healthcare field. It truly means the world to my family and I. Thank you again!  
Sincerely,  
Elijah*

## ISRAEL SUMMER EXPERIENCE

### SCHOLARSHIP RECIPIENT

# HAILEY WEISSMAN

During the summers of 2021 and 2022, I went to Ramah Sports Academy (RSA) where I enjoyed living with and spending time with Israeli staff and campers. When my time at RSA came to an end, I was excited to see what my next summer adventure would be. Since my older sister had gone to South Africa a few years ago with BBYO Passport, I knew that they would be the perfect place to look for my 2023 summer adventure. Little did I expect the great memories and friendships that I would make over the three-week journey.

Fast forward to July 11, 2023, when I got to John F. Kennedy Airport to board my flight to Tel Aviv. I honestly was in disbelief that it was really happening; that I was going to Israel for three weeks. In what seemed like such a short time, I had some of the best experiences of my life. Some of those experiences include Shabbat at the Kotel, hiking Masada, and walking the Bahai Temple Gardens. These experiences were the top three highlights of my trip to Israel, and I hope to revisit them all again, hopefully many more times.

Not only were these experiences so incredible, but they also opened my eyes to the cultural diversity that lives within Israel. That being said, if I had one takeaway from this trip it would be to always go into every place you go with an open mind.

Ever since I came home, I have been dreaming about what my next time in Israel will be like, because I know for a fact that I will be going back there to revisit and relive so many of these incredible opportunities. This would not have been possible without the Israel Scholarship that I received from the Jewish Foundation of Greater New Haven. I could not be more grateful for the life changing experience you helped me receive and the people that you helped me meet, thank you; תודה רבה.

Are you interested in your own Israel Summer Experience? Learn more and apply for a scholarship today by visiting [newhavenjewishfoundation.org/scholarships](https://newhavenjewishfoundation.org/scholarships) or by scanning the QR code.



HAILEY WEISSMAN

I could not be more grateful for the life-changing experience you helped me receive and the people that you helped me meet, thank you!

- Hailey Weissman

# EXAMINING ESG INVESTING THROUGH A JEWISH LENS



Dr. Craig Sklar, Jewish Foundation Investment Chair

As Chair of the Jewish Foundation Investment Committee, I felt that it was important to expand my knowledge base and, hopefully, apply what I learn to better serving our community needs and goals.

- Dr. Craig Sklar

Philanthropy has always been important to Dr. Craig Sklar. “My father was the only member of his family to survive the Holocaust,” he says. “He always stressed the importance of giving as long as one had something to give.” So, it is no wonder that, since settling in the New Haven area some 40 years ago, Sklar has dedicated much of his personal time to helping the Jewish community — both in New Haven and worldwide — through his involvement in the Jewish Foundation of Greater New Haven.

Now Sklar, who serves as the Jewish Foundation’s Investment Chair, Chair of the Jewish Elderly Grants Committee, and is a past Chair of the Jewish Foundation, has taken his devotion to community to the next level by enrolling in a 13-week certification course at NYU Stern School of Business called “Jewish Impact Investing Certificate Program.” Once completed, Sklar will have earned an NYU Executive Education Certificate. Limited to only 20 participants — largely investment professionals from various Federations nationwide (in fact, Sklar is one of the only lay leaders) — the unique course examines the potential benefits of impact investing, with an emphasis on promoting Jewish values (as related to ESG), investing in Israel, and better leveraging Foundation/Federation investments and donor-advised funds. It isn’t difficult to see how the ESG investment movement maps to Jewish values, Sklar notes: E (environmental) ties to the Jewish concept of tikkun olam (repairing the world); S (social) ties to chesed (kindness); and G (governance) ties to tzedek (justice or righteousness).

“We have studied investment principles as well as extensive commentary concerning initiatives evaluating the pros and cons of impact investing,” he says. “The course instructors, Michael Lustig and Nir Tsuk, have extensive experience in the investment arena and have demonstrated, via course work and guest speakers, how initial investments can provide amplified societal benefits.”

The hope is to make an initial investment that sustains and “keeps the good going” — in a way, “profit with a purpose.” The course, designed in partnership with New York University’s Institute for Impact and Intrapreneurship at NYU Bronfman and the newly formed Jewish Federations Center for Philanthropic Investment, was brought to Sklar’s attention by Lisa Stanger, Jewish Foundation Executive Director.

“As Chair of the Jewish Foundation Investment Committee, I felt that it was important to expand my knowledge base and, hopefully, apply what I learn to better serving our community needs and goals,” he explains. “While I served as Foundation Chair, we initiated an investment with JLens; an investment vehicle that helps to advocate for Jewish causes. This was a natural extension.” Would Sklar recommend the course to other Jewish Federation and Foundation lay leaders? He would. “[It is] a means of learning and upholding our fiduciary responsibilities, while striving to improve our world.”

# GIVING TIPS

## IRA CHARITABLE ROLLOVER

The IRA charitable rollover creates an opportunity for donors to establish an endowment or make an outright charitable gift to a charitable organization. Your rollover can be directed for a capital campaign gift or current needs, or restricted for endowment purposes. Your gift can be earmarked for your synagogue, a local Jewish agency, Jewish education, or any program or organization that is important to you. In addition, if you have a secondary, smaller IRA that is not a necessary income source,

this is an opportunity to donate that IRA to our community and make a significant and much-needed impact.

### 12 THINGS TO KNOW ABOUT THE IRA CHARITABLE ROLLOVER:

1. The distribution from your IRA must be made directly to the charitable organization.
2. You must be 70½ or older at the time that the distribution is made.
3. The IRA charitable rollover opportunity is permanent; you can do it this year and every year.
4. The maximum amount that can qualify is \$105,000 (in 2024, amount adjusts each year for inflation).
5. The IRA charitable rollover will satisfy your required minimum distribution.
6. You can roll over more than your required minimum distribution and in addition to your required minimum distribution (up to \$105,000 to charity).
7. The amount of the IRA charitable rollover does not need to be reported as income on your federal or Connecticut income tax return.
8. Only distributions from traditional and Roth IRAs qualify.
9. To qualify, the distribution can only be for charitable purposes and cannot be designated for a donor-advised fund, supporting organization, or private foundation.
10. Thanks to the 2022 Omnibus Bill, a one-time qualified IRA charitable distribution of \$50,000 is permitted for a charitable gift annuity or charitable trust.
11. No goods or services can be received in exchange for the distribution (e.g., tickets or dinner).
12. In most cases, you will need to contact your IRA plan administrator/ financial institution.

### EXTRA TIP: CONSIDER BUNCHING!

No longer itemizing? Consider “bunching” donations.

The advice from many experts is to bunch donations so that your itemized deductions go beyond the current standard deduction amounts for 2023 of \$13,850 for individuals and \$27,700 for those who file jointly (adjusted annually for inflation). If you do not routinely exceed the standard deduction, you can get over it by bunching donations of stock to charities or to a donor-advised fund.

# OPEN A DONOR-ADVISED FUND

Think of a donor-advised fund (DAF) as your charitable bank account. When you contribute cash or securities to your DAF, you are eligible to take an immediate tax deduction. Those funds can be invested for tax-free growth, and you can recommend grants to any IRS-qualified public charity over time.

1. Establish a special charitable fund in your name with the Jewish Foundation.
2. Contribute cash or appreciated securities.
3. Foundation sells the assets and credits your fund with the sale proceeds.
4. You receive a tax receipt for charitable deduction purposes — no capital gains taxes are payable.
5. The proceeds are invested and continue to work for you, tax-free.
6. Request distribution to qualified charities — at your convenience.

# STOCK GIVING

## DONATING LONG-TERM APPRECIATED SECURITIES CAN PROVIDE ADDITIONAL TAX BENEFITS

When you donate long-term appreciated securities, you can claim a charitable income tax deduction for the fair market value of the securities on the date of transfer, no matter what you originally paid for them. You pay no capital gains tax on the transfer.

*Donating the stock results in no capitals gains tax being paid, a larger itemized deduction, and more money for the charity of your choice. That’s a win-win!*

### IF THE SECURITIES HAVE APPRECIATED

If the securities originally cost \$2,000 and now have a fair market value of \$10,000, you do not pay tax on the \$8,000 gain. You may, however, claim a charitable income tax deduction for the full \$10,000.

### IF THE SECURITIES HAVE DEPRECIATED

In this case, it is usually better to sell first. By doing so, you can take the capital loss for tax purposes and then donate the cash.

	Gift of \$10,000 cash	Gift of \$10,000 stock
Initial cost basis of securities/appreciation	N/A	\$2,000/\$8,000
Capital gains tax saved or paid (assumes 20% rate)	N/A	\$1,600
Personal income tax savings (0.35 × amount donated)	\$3,500	\$3,500
<b>Net tax savings</b>	<b>\$3,500</b>	<b>\$5,100</b>

*This example assumes 35% tax bracket, a cost basis of \$2,000, that the investment has been held for more than a year, and that all realized gains are subject to a 20% long-term capital gains tax rate. This does not take into account any state or local taxes.*

You can reach out to Foundation with any questions about tax planning. [foundation@jewishnewhaven.org](mailto:foundation@jewishnewhaven.org)



To learn more, visit [newhavenjewishfoundation.org/donor](https://newhavenjewishfoundation.org/donor) or scan the QR code.



# 2023 FINANCIAL SUMMARY

Total Foundation Assets (see page 28 for more information) **\$73,417,802**

Contributions (in gifts received) **\$1,972,575**

Charitable Distributions/Grants **\$4,108,107**



## Top 5 Distributions

PACE/LOJE distributions to Federation Annual Campaign **\$666,459**

Security Grants **\$250,000**

Jewish Elderly Grants **\$176,000**

Israel Emergency Campaign (humanitarian aid to Israel) **\$54,000**

Scholarships for Jewish Overnight Camps **\$25,700**

For a complete list of all organizations that received charitable distributions, visit [newhavenjewishfoundation.org/funds-listing](https://newhavenjewishfoundation.org/funds-listing) or scan the QR code.



## COMMUNITY IMPACT OF 2023 CHARITABLE DISTRIBUTIONS

Total 2023 Charitable Distributions

**\$4,108,107**



Local Secular  
**\$186,743**



Nonlocal Secular  
**\$264,033**



Nonlocal Jewish  
**\$417,581**



Local Jewish Organizations and Synagogues  
**\$3,239,750**

## LOCAL JEWISH DISTRIBUTIONS AND GRANTS



Local Jewish Organizations and Synagogues

**\$3,239,750**



Jewish Federation of Greater New Haven  
**\$1,297,063\***



Local Jewish  
**\$1,026,339**



Local Jewish Other  
**\$228,281**



Jewish Family Service/Jews in Need  
**\$208,913**



Jewish Eldery  
**\$142,400**



Day Schools  
**\$114,428**



JCC of Greater New Haven  
**\$79,893**



Camp Laurelwood  
**\$66,649**



Scholarships Awarded  
**\$46,125**



Jewish Education  
**\$29,659**

\*Includes distributions from Restricted (PACE/LOJE) Funds, Donor-Advised Funds, and Unrestricted Funds.

# THE ENDOWMENT

Fund and Financial Activity for Fiscal Year ending December 31, 2023 (unaudited)\*

Assets	
Investments at Market Value	71,042,572
Cash and Cash Equivalents	185,862
Israel Bonds	480,246
Insurance Policies at Cash Value	237,781
Other Assets	112,588
Loan Receivable	1,358,753
<b>Total Assets</b>	<b>\$73,417,802</b>
Liabilities	
Accounts Payable and Accrued Liabilities	86,858
Grants Payable	37,991
Designated Custodial/Agency Funds	14,663,817
Liabilities under Split-Interest Agreements	457,903
<b>Total Liabilities</b>	<b>\$15,246,569</b>
<b>Assets Minus Liabilities</b>	<b>\$58,171,233</b>
Revenue and Contributions	
Contributions	1,972,575
Investment Return	5,291,777
<b>Total Revenue</b>	<b>\$7,264,352</b>

## Expenses and Charitable Distributions

Charitable Distributions from Funds	4,108,107
Life Income Payments from Charitable Remainder Trust and Annuities	66,808
Investment Fees	267,741
Foundation Operating Expenses	858,558
<b>Total Expenses &amp; Charitable Distributions</b>	<b>\$5,301,214</b>

## Revenue Minus Expenses

Fund and Financial Activity for Fiscal Year ending December 31, 2023 (unaudited)\*

\* The Jewish Foundation of Greater New Haven's Audit is conducted by Teplitzky & Co. As of the printing of this Annual Report, the audit for the FYE 12/31/23 was not yet completed.

# MANAGER LEVEL DETAIL

As of December 31, 2023

TOTAL MANAGED PORTFOLIO (Net)	100%	PRIVATE INVESTMENTS	35.77%
<b>CASH and EQUIVALENTS</b>	<b>3.32%</b>	<i>Private Credit III Offshore, L.P.</i>	
<b>FIXED INCOME</b>	<b>15.96%</b>	<i>Private Credit IV Offshore, L.P.</i>	
<i>Vanguard Intermediate Term Treasury ETF</i>		<i>Golub Capital Partners International 11, L.P.</i>	
<i>Guggenheim Total Return Bond Fund</i>		<i>Via Energy Fund III, L.P.</i>	
<i>Doubleline Total Return Bond Fund</i>		<i>Park Street Capital Natural Resources Fund V, L.P.</i>	
<i>Guggenheim Limited Duration Bond Fund</i>		<i>Commonfund Natural Resources Partners VIII, L.P.</i>	
<i>Vanguard Short Term Treasury ETF</i>		<i>Brep X Offshore Access Fund, L.P.</i>	
<i>Vanguard Long Term Treasury ETF</i>		<i>Private Equity IV Offshore, L.P.</i>	
<i>Multi-Sector Credit Offshore, Ltd.</i>		<i>Private Equity V Offshore, L.P.</i>	
<i>Brevet Short Duration Fund, Ltd</i>		<i>Private Equity VI Offshore, L.P.</i>	
<b>HEDGE FUNDS</b>	<b>14.46%</b>	<i>Private Equity VII Offshore, L.P.</i>	
<i>Hedged Equity - Offshore, Ltd</i>		<i>Private Co-Investment Opportunities Offshore, L.P.</i>	
<i>Sculptor Overseas Fund II, Ltd.</i>		<i>Private Equity VIII Offshore, L.P.</i>	
<i>Absolute Return Strategies - Offshore, Ltd</i>		<i>Landmark Equity Partners XIV, L.P.</i>	
<i>Public Opportunities Program</i>		<i>Landmark Equity Partners XV, L.P.</i>	
<b>PUBLIC EQUITY</b>	<b>30.50%</b>	<i>Park Street Capital Private Equity Fund X, L.P.</i>	
<i>Vanguard Total Stock Market Index Fund</i>		<i>Private Equity IX Offshore</i>	
<i>Vanguard FTSE Developed Markets ETF</i>			
<i>Vanguard Value ETF</i>			
<i>Vanguard Total Stock Market ETF</i>			
<i>Parametric-Jlens</i>			
<i>Spdr Portfolio S&amp;P 500 Growth ETF</i>			
<i>Vanguard FTSE Emerging Markets ETF</i>			
<i>Hartford International Value Fund</i>			
<i>WCM Focused International Growth Fund</i>			
<i>Victory Sycamore Established Value Fund</i>			
<i>Alatus Inflection Long Only Fund Limited</i>			
<i>Indus Select Fund, Ltd</i>			
<i>Edgewood Growth Fund</i>			
<i>Greenhouse Long Only Onshore Fund, L.P.</i>			
<i>Tweedy Browne International Value Fund II</i>			
<i>Akre Focus Fund</i>			

# PERFORMANCE SUMMARY

	YTD	3YR (A)	INCEPTION(A)	RISK: VOL	INCEPTION
<b>TOTAL PORTFOLIO</b>	<b>8.5%</b>	<b>6.1%</b>	<b>9.9%</b>	<b>8.7%</b>	<b>1/1/2017</b>
Index Composite	16.8%	4.3%	8.1%	10.6%	
<b>65% MSCI ACWI / 35% Barclays US Aggregate Bond Index</b>	<b>16.2%</b>	<b>2.7%</b>	<b>7.2%</b>	<b>10.1%</b>	
PUBLIC PORTFOLIO					
<b>FIXED INCOME</b>	<b>5.3%</b>	<b>(0.8%)</b>	<b>2.3%</b>	<b>3.4%</b>	<b>1/1/2017</b>
Bloomberg US Aggregate Bond Index	5.5%	(3.3%)	1.3%	4.9%	
<b>INDEPENDENT RETURN STRATEGIES</b>	<b>9.5%</b>	<b>(0.4%)</b>	<b>3.0%</b>	<b>6.1%</b>	<b>8/2/2017</b>
HRFI Fund Weighted Composite	8.1%	2.9%	4.1%	6.0%	1/1/2017
<b>PUBLIC EQUITY</b>	<b>21.0%</b>	<b>5.2%</b>	<b>9.7%</b>	<b>16.2%</b>	
MSCI ACWI (All country World (Net Return))	22.2%	5.7%	10.0%	15.2%	
<b>PUBLIC OPPORTUNISTIC STRATEGIES</b>	<b>2.4%</b>	<b>2.4%</b>	<b>3.8%</b>	<b>7.8%</b>	<b>1/1/2017</b>
Public Opportunistic Blended Benchmark	4.0%	4.0%	1.4%	9.3%	
PRIVATE PORTFOLIO					
<b>PRIVATE INCOME</b>	<b>10.1%</b>	<b>9.2%</b>	<b>8.8%</b>		<b>3/28/2017</b>
S&P Leveraged Loan Index	13.3%	5.7%	4.8%	-	
<b>PRIVATE EQUITY</b>	<b>(0.3%)</b>	<b>18.0%</b>	<b>24.6%</b>	<b>2.18</b>	<b>3/20/2017</b>
C/A Private Equity Index	7.6%	12.8%	17.9%		

(A) Performance for periods greater than one year is annualized. If applicable, investments held for less than one year are not annualized and indicated by (\*).

# INVESTMENT & MANAGEMENT

For the fiscal year ending December 31, 2023, the Foundation's managed portfolio had a one-year rate of return of 8.5%, a three-year rate of return of 6.1%, and a seven-year rate of return of 9.9%.

In January 2017, following an extensive request for proposal (RFP) process by the Foundation's Investment Committee, the Jewish Foundation's board of trustees engaged SCS Financial to serve as the new investment advisor for the Jewish Foundation. One of the goals of engaging SCS was to combine both tactical and strategic advising to ensure ongoing, proactive, and timely portfolio strategy implementation within the Investment Policy Statement established by the Investment Committee, accompanied by excellent manager selection, asset allocation strategy, and sophisticated portfolio exposures.

The Foundation's Investment Committee, in consultation with the outside independent investment advisor, established an allocation strategy and long-term outlook for the investment and management of the Foundation's endowment funds that will target a total return (income plus capital change) that will preserve and enhance (in real dollar terms) the principal value of the funds and provide a dependable source of support for current operations and programs. The Foundation's long-term approach to endowment spending has sought to maintain and grow each endowment fund while providing the beneficiary organization with consistent distributions.

## ASSET ALLOCATION

The Foundation has continued to maintain a moderately conservatively positioned portfolio, which is well-diversified, constantly monitored, and strategically rebalanced.

## SPENDING POLICY

Each year, the board of trustees of the Jewish Foundation approves a prudent spending policy that is applied to all unrestricted funds as well as Foundation-owned restricted funds. The spending policy is developed in consultation with our investment advisor, as well as the Foundation's Finance and Investment Committees.

In making its decision for 2023, the board followed the Uniform Prudent Management of Institutional Funds Act and approved a spending policy that takes into account the uses, benefits, purposes, and duration of the endowment. The current spending policy is 4.0% of a fund's average fair market value for the rolling prior 12 quarters.

# 2023 NEW FUNDS AT THE JEWISH FOUNDATION

## NEW PACE/LOJE FUNDS

- Judith and Stephen August Family PACE Fund
- Linda and Lenny Bell Family PACE Fund
- Leatrice and Richard Brodner PACE Fund
- Lynn and Jay Brotman PACE Fund
- Linda S. Caplan Lion of Judah Endowment
- Nancy Cohen Family PACE Fund
- Ronald M. Farber Memorial PACE Fund
- Adam Fleischman PACE Fund
- Andrea Fleischman Lion of Judah Endowment
- Julie Fleischman PACE Fund
- Samantha Fleischman PACE Fund
- Zoe Fleischman PACE Fund
- Patricia and Gary Ginsberg Family PACE Fund
- Judith Hahn Lion of Judah Endowment Fund
- Irene and Bruce Jacobs Family PACE Fund
- Sandy and Elliott Kerzner PACE Fund
- Edward Konowitz Family PACE Fund in memory of David, Jack, and Bertha Konowitz
- Joan and Stuart Margolis Family PACE Fund
- Nancy and Marc Olins Family PACE Fund
- Silverman and Sokolow Family PACE Fund
- Colby and David Sirowich PACE Fund

## DESIGNATED FUND FOR CAMP LAURELWOOD

- Zachs Family Fund for the benefit of Camp Laurelwood, Inc.

## DESIGNATED FUND FOR THE JEWISH HISTORICAL SOCIETY

- Barry and Hyla Vine Endowment for the Jewish Historical Society

## DESIGNATED FUND FOR UCONN HILLEL

- Zachs Family Foundation for the benefit of B'Nai Brith Hillel Foundation (UConn Hillel)



## DESIGNATED FUND FOR TEMPLE EMANUEL

- Caryn and Lew Shaffer Fund for Temple Emanuel

## DESIGNATED FUNDS FOR FRIENDS OF JEWISH HERITAGE POLAND, INC.

- Krosniewice Jewish Cemetery Fund in memory of Sol Rosenkranz
- Saltzman Family Fund to support Friends of Jewish Heritage Poland, Inc.

## DESIGNATED FUNDS FOR BEKI

- Charles and Violet Ludwig Fund for Congregation BEKI in honor of Jay Sokolow
- Stephen and Rachel Wizner Family Fund for Tikun Olam at Congregation Beth El-Keser Israel

## BUILD A TZEDAKAH FUNDS

- Dylan Joshua Schatz Tzedakah Fund
- Marley Alexandra Bloom Tzedakah Fund

## DONOR ADVISED/FAMILY PHILANTHROPY FUNDS

- Terman Charitable Fund
- Pearl Family Charitable Fund

## DESIGNATED FUND FOR SOLOMON SCHECHTER SCHOOL-WEST HARTFORD

- Zachs Family Fund for the benefit of Solomon Schechter School of Greater Hartford

## OTHER DESIGNATED RESTRICTED CUSTODIAL FUNDS

- Hibuki International, Inc.
- Susan E. and Dr. Stuart Jacobson z'l Endowment in memory of our parents Harry Aaron & Rebecca Govrin Jacobson

## UNRESTRICTED FUND

- Alvin and Irma Evans Fund in memory of Louis & Anna Kronick and Samuel and Mary Evans

For a complete list of funds that received donations in 2023, please visit [newhavenjewishfoundation.org/funds-listing](https://newhavenjewishfoundation.org/funds-listing) or scan the QR code.



# CHARITABLE GIFT ANNUITIES AND CHARITABLE TRUSTS

## CHARITABLE GIFT ANNUITY

- Phyllis Bausher Charitable Gift Annuity for the benefit of Jewish Family Service and Congregation Mishkan Israel
- Alvin and Irma Evans Charitable Gift Annuity
- Janet F. Gans Charitable Gift Annuity I-II
- Ruth and Jerome Gross Memorial Fund for the benefit of Southern Connecticut Hebrew Academy
- Edward Konowitz Charitable Gift Annuity for the benefit of the Jewish Federation I-II
- Rabbi Murray Levine CGA I-VI
- Norman K. and Elaine S. Silverman Charitable Gift Annuity for the Jewish Aged, in Memory of Louis Silverman, Sophia Silverman, Morris Straka, Tessie Straka, and J. William Silverman
- Marian Fox Wexler Charitable Gift Annuity

## CHARITABLE REMAINDER ANNUITY AND UNITRUST

- Harvey C. Bixon 2004 Charitable Trust

## DEFERRED CHARITABLE GIFT ANNUITY

- Ira B. Fink Deferred Charitable Gift Annuity
- Karen G. Horowitz Deferred Charitable Gift Annuity



# PACE & LOJE FUNDS

Consider endowing your annual gift to the Jewish Federation of Greater New Haven's Annual Campaign. These members of our community, through current and planned gifts of cash, insurance, and bequests, have established PACE and LOJE funds.

- |  |  |   |   |
|--|--|---|---|
| <ul style="list-style-type: none"> <li>• Josef and Cecle Adler</li> <li>• Lucille Alderman</li> <li>• Norman and Caron Alderman</li> <li>• Anonymous</li> <li>• Esther and David Amerling</li> <li>• Atkins Family</li> <li>• Sara and Hillel Auerbach</li> <li>• Judy and Stephen August</li> <li>• Gerald, Debra, Alivia, Maxwell, and Harrison Barker</li> <li>• Brad E. Beckerman</li> <li>• David A. Beckerman Family</li> <li>• Linda and Lenny Bell Family*</li> <li>• David and Sharon Bender Family Foundation, Inc.</li> <li>• Stacey and Robert Bland</li> <li>• Marjorie and Norman Botwinik</li> <li>• Stanley Botwinik</li> <li>• Leatrice &amp; Richard Brodner*</li> <li>• Lynn &amp; Jay Brotman Family*</li> <li>• Linda S. Caplan*</li> <li>• Frederick A. and Justine Millspaugh Catlin Family Foundation</li> <li>• Linda and Jesse Cedarbaum</li> <li>• Linda and Jeffrey Chaffkin</li> <li>• Benjamin and Freda Cohen</li> <li>• Donald and Pearl Cohen</li> <li>• Linda and Kenneth Cohen</li> <li>• Nancy Cohen Family*</li> <li>• Rhoda and Aaron Cohen</li> <li>• Scott and Joanna Cooper</li> <li>• Herman and Esther Copelon</li> <li>• Michael Diamond</li> <li>• Irving Eckhardt in memory of his parents, Nathan and Ida Frederick</li> <li>• M. and Elizabeth P. Edelmuth</li> <li>• Yvette Eder</li> </ul> | <ul style="list-style-type: none"> <li>• Eileen and Andrew Eder</li> <li>• Sidney and Arthur Eder</li> <li>• Jody Ellant</li> <li>• Richard and Debra Epstein</li> <li>• Jack Evans</li> <li>• Ronald M. Farber*</li> <li>• Dale and Robert Felice</li> <li>• Mary and Jacob Falek</li> <li>• Emily Fine and Stephen Stein</li> <li>• Fischman Family</li> <li>• Gerald and Marilyn Fishbone</li> <li>• J. David Fischer</li> <li>• Stephen &amp; Andrea Fleischman</li> <li>• Adam Fleischman*</li> <li>• Andrea Fleischman*</li> <li>• Julie Fleischman*</li> <li>• Samantha Fleischman*</li> <li>• Zoe Fleischman*</li> <li>• Joseph Forman</li> <li>• Claire Frankel</li> <li>• Ian Freeman</li> <li>• Frenkel Family</li> <li>• Suzanne Gallant</li> <li>• David P. Gershoni</li> <li>• Rose B. and Barbara Gingold</li> <li>• Patricia and Gary Ginsberg*</li> <li>• Samuel and Marcella Glazer</li> <li>• Dr. Milton and Gladys Godfried</li> <li>• Leo and Beatrice Gold</li> <li>• Lindy Lee Gold</li> <li>• Barbara Greenberg</li> <li>• Velma and Stuart Grodd</li> <li>• Judith Hahn</li> <li>• Lauren and David Hass</li> <li>• Penny Marcus and Allan Hillman</li> <li>• Jeffrey and Betsy Hoos</li> <li>• Heidi and Norman Hurwitz</li> </ul> | <ul style="list-style-type: none"> <li>• Jocelyn and Scott Hurwitz</li> <li>• Irene &amp; Bruce Jacobs*</li> <li>• Ruth and Sherman Jacobson</li> <li>• Jewish Foundation of Greater New Haven</li> <li>• Gerald Kagan</li> <li>• Cari and Keith Kaplan</li> <li>• Iny and Joel Karp</li> <li>• Katzman Family</li> <li>• Sandy &amp; Elliott Kerzner*</li> <li>• Komisar Family</li> <li>• Edward Konowitz</li> <li>• Jacqueline Koral</li> <li>• George and Susan Krall</li> <li>• Ilse H. Krevit</li> <li>• Sherman and Evelyn Krevolin</li> <li>• Robert N. and Goldythe B. Langerman</li> <li>• Arthur Allen Leff</li> <li>• Cindy and David Leffell</li> <li>• Marvin and Helaine Lender</li> <li>• Donna and Sidney Levine</li> <li>• Beverly and John Levy</li> <li>• Lichtman Family</li> <li>• Benjamin Liveten</li> <li>• Lawrence A. Loeb</li> <li>• William Loftus</li> <li>• Joan and Stuart Margolis*</li> <li>• Martin Family</li> <li>• Sam and Rose Merriam Family</li> <li>• Miller-Goodman Families</li> <li>• Boris Mizhen Family</li> <li>• Nancy &amp; Marc Olins*</li> <li>• Barbara and Jeffrey Orell</li> <li>• Zelma Pacella</li> <li>• Hap and Stacey Jackson Perkins</li> <li>• Sydney A. Perry</li> </ul> | <ul style="list-style-type: none"> <li>• Jodi and Richard Pollack Family</li> <li>• Francine and Alan Ponchick in memory of Marvin and Norma Schaefer</li> <li>• Portnoy Family</li> <li>• Hyla Raphael</li> <li>• Eric Ravid Family</li> <li>• Howard Reiter z"l and Jody Ellant</li> <li>• Marcia W. and Stanley F. Reiter</li> <li>• Alan and Elizabeth Kaye Reznik Family</li> <li>• Susan and Stuart Rosenholtz</li> <li>• James Sachs</li> <li>• Marilyn Saltzman</li> <li>• Stephen L. Saltzman</li> <li>• Lewis Savitsky</li> <li>• Shirley F. Scholder</li> <li>• Arlene and Arnold Shanbrom</li> <li>• James M. Shure</li> <li>• Gale and Michael Silverberg</li> <li>• Ina Silverman and Jay Sokolow*</li> <li>• Nate M. Silverstein</li> <li>• Colby and David Sirowich*</li> <li>• Susan Skalka</li> <li>• Green and Sklarz Foundation</li> <li>• Sklarz Family</li> <li>• Judy Skolnick</li> <li>• Lisa A. Stanger</li> <li>• Robyn &amp; Jeffrey Teplitzky</li> <li>• Shirley and Morris Trachten</li> <li>• David and Stacey Trachten</li> <li>• Barry J. Vine</li> <li>• Hyla Goldberg Vine</li> <li>• Kalman Watsky &amp; Deborah Fried</li> <li>• Melanie Waynik &amp; Wayne Larrison</li> </ul> |
|--|--|---|---|

\*Indicates new fund 2023

THE COMMUNITY WAS THERE FOR YOU.  
WHO WILL BE THERE FOR THE NEXT GENERATION?  
YOU WILL.

By endowing your annual gift with a PACE or LOJE.

# PHILANTHROPIC AND DONOR-ADVISED FUNDS

For individuals and families seeking active involvement in philanthropy, a Philanthropic Fund (also called a donor-advised fund) allows the donor to create a named fund that provides flexibility in charitable giving. These funds allow the donor to recommend distributions to any qualified tax-exempt organization — think of it as a charitable checking account. The Jewish Foundation administers the fund, vets grantees, and invests the assets.

This is a wonderful way to involve the family in giving — the donor and their family can sit around the dinner table and decide which charitable organizations they want their fund to distribute. These funds can be established with a minimum gift of \$10,000.

## FIELD OF INTEREST/DONOR-ADVISED FUNDS

- Tillie L. and Albert B. Friedman Fund for Jewish Education in Honor of Sophia, Aaron, and Benjamin Bruce
- Carol Ruth Jacobs Memorial Fellowship Fund for Teachers
- Lenny Margolis Athletic Endowment Fund for the benefit of the JCC
- The Jacolyn A. Mott Scholarship Fund for the Northwest Conservation District
- Marcia and Stanley F. Reiter Philanthropic Fund for New Haven Hebrew Day School
- Marcia and Stanley F. Reiter Philanthropic Fund for Jewish Education
- Marcia and Stanley F. Reiter Fund for Westville Synagogue
- Mark and Heni Schwartz Family Fund for Jewish Family Service, Westville Synagogue, and Jewish Education
- Emily Fine and Stephen Stein Fund for Musical Enrichment in the Jewish Community
- Shirley and Morris Trachten Fund for Jewish Education

## UNDESIGNATED PHILANTHROPIC/DONOR-ADVISED FUNDS/FAMILY FUNDS

- Anonymous (2)
- Caron and Norman Alderman Family Fund
- David and Karen Astrachan Family Fund
- Judith and Stephen August Philanthropic Fund
- Neil Bersin Philanthropic Fund in honor of his 50th birthday
- Samuel and Barbara Bobrow Family Fund
- Alayne and Martin S. Burger Philanthropic Fund
- The Alan J. Cohen Charitable Fund
- Benjamin and Freda Cohen Philanthropic Fund
- Elaine and Dr. Joseph Dworkin Fund for Art & Science Education
- Andrew Eder Family Fund
- Arthur Eder Family Fund
- Feldman Family Philanthropic Fund
- The Fischman Family Philanthropic Fund
- Gerald and Marilyn Fishbone Family Philanthropic Fund
- Fleischman Family Foundation
- Suzanne and Murray Gallant Fund
- Gershoni Family Foundation
- Gary and Patricia Ginsberg Family Fund
- Marcella and Samuel Glazer Philanthropic Fund
- Israel and Adele Gordon Family Fund

- Barbara Greenberg Philanthropic Fund of the Jewish Foundation of Greater New Haven
- Eva Grinberg Fund in memory of her parents, Moshe Elhaan and Jesha Benjamin Klein
- Judith Hahn Philanthropic Fund
- Janice and Robert Horowitz Philanthropic Fund
- Hurwitz Family Fund
- Iny and Joel Karp Philanthropic Fund
- Marilyn A. Katz Philanthropic Fund in memory of Jay Katz
- Louis and Beatrice Kaye Foundation Philanthropic Fund
- Kinstlinger-Feist Family Fund
- Edward Konowitz Family Philanthropic Fund
- Julie Kovar Fund
- Kenneth and Robin Kramer Family Fund
- Sherman and Sara Kramer Family Philanthropic Fund
- Sherman and Evelyn Krevolin Family Fund
- Arthur and Betty Levy Family Fund
- John and Beverly Levy Fund
- Major Feuerstein Family Fund
- Pearl Family Fund\*
- Pearl Mantell Fund
- Saul and Sandra Milles Family Fund
- Leo and Libby Nevas Collaboration Grant Fund
- Jeanette and Dan Oren Family Fund
- Daniel and Lisa Price Philanthropic Fund
- Jo-Ann N. and Michael P. Price Family Fund
- Rastelli-Weiner Charitable Fund
- Ronald and Pamela Reis Philanthropic Fund
- Howard J. Reiter z”l and Jody P. Ellant Foundation Philanthropic Fund
- Marcia and Stanley F. Reiter Philanthropic Fund
- Kenneth Rosenthal and Catherine Forman Philanthropic Fund
- Joyce and Kopi Saltman Philanthropic Fund
- Stephen and Marilyn Saltzman Philanthropic Fund
- Anita Saxe Memorial Charitable Fund

- Schaefer-Lawall Family Fund
- Edwin and Lorrie Schaefer Family Fund
- Schulman Family Donor Advised Fund
- Herbert Setlow Family Fund
- Marcie and Carolyn Setlow Family Philanthropic Fund
- Arnold and Arlene Shanbrom Philanthropic Fund
- Lawrence and Sherry Shanbrom Fund
- Silverman Sokolow Family Tzedakah Fund
- Nathan M. Silverstein Family Charitable Fund
- Nanci and Craig Sklar Family Fund
- Sklarz Family Philanthropic Fund
- Skolnick Family Fund
- Rosalyn and Kenneth Sperling Family Foundation
- Maddy and Larry Tannenbaum Family Fund
- Terman Family Fund\*
- Stacey & David Trachten Family Foundation
- Teplitzky Family Foundation
- Barry and Hyla Vine Family Fund
- Gail Brekke and Jim Vlock Family Fund
- William and Florence Wallack Family Philanthropic Fund
- Watsky Fried Family Fund
- The Wolpert Family Fund in memory of Reneé Levy

*\*Indicates new fund 2023*

# DESIGNATED ENDOWMENT FUNDS

## INCLUDES:

1. Designated restricted funds
2. Designated custodial/agency-owned funds
3. Field of interest philanthropic/donor-advised funds
4. Designated charitable trusts and annuities

## FUNDS TO SUPPORT THE JEWISH FEDERATION OF GREATER NEW HAVEN

- Jewish Federation of Greater New Haven Philanthropic Fund

*For funds to support the Jewish Federation of GNH annual campaign, see PACE Funds*

## FUNDS TO SUPPORT THE JEWISH COMMUNITY RELATIONS COUNCIL AND THE JEWISH COALITION FOR LITERACY

- Friends of the JCL Endowment Fund
- The Carol Sirot Fund for the benefit of the Jewish Community Relations Council in memory of Dr. Gustav Sirot

## FUNDS TO SUPPORT THE JEWISH COMMUNITY CENTER OF GREATER NEW HAVEN

- Caron and Norman Alderman Fund for the benefit of the Jewish Community Center
- Beckerman Family Supporting Foundation, Inc. for the benefit of the Jewish Community Center Endowment Fund
- Abby and Harold Bench Fund for the benefit of the Jewish Community Center
- Kenneth and Linda Cohen Family Endowment for the benefit of the JCC Swimming Pool

- Arthur and Yvette Eder Fund for the benefit of the Jewish Community Center
- Jack Evans Fund for the benefit of the Jewish Community Center, in memory of Al Evans
- Rose and John Fox Memorial Fund for the benefit of the Jewish Community Center
- Ian Freeman Life Insurance Policy for the benefit of the Jewish Community Center
- Rose B. and Barbara Gingold Fund +
- Jewish Community Center of Greater New Haven Endowment Fund in honor of Allan Greenberg
- Velma and Stuart Grodd Fund for Jewish Community Center Membership
- Hahn Silberberg Fund for the benefit of the Hahn Shelling Playground at the Jewish Community Center
- Jewish Community Center Board Endowment for the benefit of the Jewish Community Center
- Jewish Community Center Community One Event Fund
- Lydia D. Levine Fund for the benefit of Congregation Mishkan Israel and the Jewish Community Center +
- Leo Links Fund for the benefit of the Jewish Community Center
- Phillip and Ann L. Meyerson Fund for the benefit of the Jewish Community Center
- Lawrence and Sherry Shanbrom Fund for the benefit of the Jewish Community Center and the Jewish Foundation of Greater New Haven
- Dorothy Shure Memorial Fund for the benefit of the Jewish Community Center
- Colby & David Sirowich Family Fund for the benefit of the Jewish Community Center
- Teplitzky Family Endowment for the benefit of the Jewish Community Center

*Funds to Support the Jewish Community Center Day Camp are listed separately under Funds for Jewish Camping*

## FUNDS TO SUPPORT ATHLETICS AND YOUTH FITNESS AT THE JCC

- Harold “Bub” Hahn Endowment for Athletics at the Jewish Community Center
- Lenny Margolis Athletic Endowment Fund
- Martha Sue and Bertrand S. Weisbart Endowment Fund for the benefit of Youth Fitness at the Jewish Community Center

## FUNDS TO SUPPORT MUSIC, CULTURAL ARTS, AND EDUCATIONAL PROGRAMS AT THE JCC

- Fredrick A. and Justine Millsbaugh
- Catlin Family Foundation Endowment Fund for the benefit of the Jewish Community Center
- Edward Cooley Fund for Musical Programs at the Jewish Community Center
- Dr. Milton Godfried for the Jewish Community Center Cultural Programs in memory of his loving wife, Gladys
- Stuart Harris Fund for Cultural Arts at the Jewish Community Center
- Francis Shield Fund for the Jewish Community Center Healthy Women Healthy Lives Program
- Francis Shield Fund for the Jewish Community Center Cultural Arts Program

## FUNDS TO SUPPORT THE JEWISH ELDERLY

- Harry Braffman in memory of his mother, Fannie Braffman
- Benjamin and Freda Cohen Memorial Fund for Jewish Programs for the Frail and Elderly
- Community Endowment Fund for the Jewish Elderly
- Eva Kahn Fund for Elderly Services
- Jewish Elderly Services Fund
- Marion G. Litsky Fund

- Isaac S. and Mary G. Liveten Memorial Fund
- Leo Links Fund for the Jewish Elderly
- Irvin Shiner 75th Birthday Fund

## FUND TO SUPPORT THE JEWISH HOME FOR THE ELDERLY, FAIRFIELD

- Donald A. Berkowitz Memorial Fund +

## FUNDS TO SUPPORT THOSE IN NEED

### FUNDS TO SUPPORT JEWISH FAMILY SERVICE (JFS) OF GREATER NEW HAVEN

- Lucille and Arnold Alderman Fund +
- Norman and Caron Alderman Fund for JFS
- Sara-Ann & Hillel Auerbach Family Foundation for the benefit of JFS
- Phyllis Bausher Charitable Gift Annuity for the benefit of JFS and Congregation Mishkan Israel +
- Mark and Linda Caplan Family Fund for the benefit of JFS Aging Adult Program
- Benjamin and Freda Cohen Memorial Fund for JFS
- Betty A. Ellis Memorial Fund for the benefit of JFS
- Fisher Family Fund for Jewish New Haven +
- Oscar and Irma Hamburger Memorial Fund for the benefit of JFS
- Peter C. Hereld Memorial JFS Families in Crisis Endowment
- JFS Community One Event Fund
- JFS Endowment Fund
- Samuel and Rose Merriam Fund for the benefit of Congregation B’nai Jacob, Orchard Street Shul, JFS, the Jewish Federation of Greater New Haven, ADL, and the Jewish Cemetery Association of Greater New Haven +
- Mark and Heni Schwartz Family Fund for JFS, Westville Synagogue, and Jewish Education +
- BBYO Fund for the Future
- Teplitzky Family Fund for the benefit of JFS
- Maddy and Larry Tannenbaum Family Fund

## OTHER FUNDS TO HELP THOSE IN NEED

- Henry and Marion Bixon Fund +
- Clifford Beers Clinic Fund to Support Victims of Trauma
- Devorah Fund for Children with Medical Needs
- Dodie Crane Memorial Fund to Help Children in Need
- Robert R. and Anita B. Eisner Fund for Women and Children
- Janet F. Gans Charitable Gift Annuities
- Maimonides Fund
- Francis Shield Fund +
- Norman K. and Elaine S. Silverman Charitable Gift Annuity in memory of Louis Silverman, Sophia Silverman, Morris Straka, Tessie Straka, and J. William Silverman

## FUNDS TO SUPPORT THE TOWERS AT TOWER LANE

- Beckerman Family Fund for the benefit of Towers Foundation, Inc.
- Ruth Shiffrin Blum Family Fund
- Beatrice Briener Fund for the benefit of The Towers
- Cedarbaum Family Fund for the transportation of Towers residents
- Adele Edelmuth Memorial Fund for residents with cognitive impairment at Tower One/Tower East
- Louise and Irwin Epstein fund for the benefit of The Towers
- Jack Evans Fund for the benefit of The Towers Foundation, Inc.
- Dorothy Giannini-Meyers Tower One/Tower East Philanthropic Fund
- Dorothy Giannini-Meyers Fund for the benefit of The Towers
- Dr. Milton and Gladys Godfried Endowment Fund for the benefit of Tower One/Tower East Health Center
- Dr. Milton and Gladys Godfried Endowment Fund for the benefit of Tower One/Tower East
- Gladys Godfried Memorial Garden Fund at Tower One/Tower East endowed by her husband, Dr. Milton Godfried
- Gordon Family Fund for the benefit of The Towers

- Eva Kahn Endowment for The Towers Foundation, Inc.
- Vivian and Richard Kantrow Fund to benefit The Towers
- Barbara H. Katz Fund for Assistance to Resident Support Services at Tower One/Tower East
- Robert Katz Family Fund for the benefit of The Towers
- Koral Family Fund for the benefit of The Towers
- Donna and Sidney Levine Fund to provide food assistance for those in need at The Towers
- Zelda Kroogman Fund for the benefit of The Towers Foundation, Inc.
- Freda Leffell Fund for Jewish Life at The Towers
- Genevieve “Ginny” Nishball Endowment Fund for Horticulture
- James M. Shure Fund for The Towers in memory of Beverly Levy
- Nathan Sokoloff Fund, endowed by Heidi and Tracey Saxe to benefit The Towers
- Towers 50th Anniversary Endowment Fund
- Tower One/Tower East Community One Event Fund
- Tower One/Tower East Endowment Fund
- Towers Endowment in Honor of Evelyn Siegal
- Tower One/Tower East Philanthropic Fund
- Towers’ Residents Fund in Honor of Barry and Hyla Vine
- Hyla and Barry Vine Family Endowment for The Towers
- Towers Endowment in Honor of Fran Wallnau

## FUNDS TO SUPPORT JEWISH EDUCATION AND THE CENTER FOR JEWISH LIFE AND LEARNING (CJLL, FORMERLY DJE)

- Beckerman Family Supporting Foundation Endowment Fund for the benefit of the Department of Jewish Education

*+ Indicates funds for multiple beneficiaries listed in multiple locations.*

- Ceal B. Berson Fund for Community Jewish Education
- Abraham Bettigole Fund for Jewish Education
- Ida Bettigole Fund for Jewish Education
- Benjamin and Freda Cohen Memorial Fund for DJE
- Dr. Milton and Gladys Godfried Endowment Fund for the Children's Library at the Jewish Community Center
- Sidney Gross Educational Fund
- Judith A. Kaye Fund for Improving Jewish Education Through Teacher Training
- Charlotte W. and Donald L. Perloth Scholarship Fund for Jewish Education
- Dr. Brigitte Prusoff Endowment Fund for the Department of Jewish Education Taste of Honey Program
- William H. Prusoff Education Fund
- Marcia and Stanley F. Reiter Fund for Jewish Education
- Eugene Schaffer Memorial Fund for Support of Panim el Panim, the Jewish Civics Initiative for Youth, established by Gloria Schaffer
- Mark and Heni Schwartz Family Fund for Jewish Family Service, Westville Synagogue, and Jewish Education +
- Bessie Jacob Shafer Fund for the CJLL Library at the Jewish Community Center
- Richard and Judith Hahn Shelling Scholarship Fund for Jewish Education
- Freida Shure Memorial Award Fund

### FUNDS TO SUPPORT HOLOCAUST EDUCATION

- Murray and Marvin Lender Holocaust Education Fund
- Marcel & Lea Gutman and Levi & Batya Glenn Holocaust Education Fund
- Barbara Weber Rosenthal Holocaust Education Fund

### FUNDS TO SUPPORT SPECIAL NEEDS EDUCATION

- David Kaplan Memorial Fund for the Jewish Education of Children with Special Needs, established by his daughter and son-in-law, Mildred and Arnold Mangan
- Esther Krevit and Andrea Krevit Ross Fund for the benefit of special needs disabled children

- Shirley and Irving Kroopnick Fund for the benefit of Talmud Torah Meyuchad, the New Haven Jewish Educational Program for disabled children
- Esther S. and David A. Lipman Fund for Jewish Education (for special education)
- Marion and Barry Schwartz Fund for Special Needs\*
- Milton and Beatrice Smirnoff Fund for disabled children with Special Needs
- Special Needs Education Fund

### FUNDS TO SUPPORT MARCH OF THE LIVING

- Judith and Eldon Bernstein Fund for March of the Living
- Congregation Kol Ami March of the Living Fund
- The Kinstlinger, Feist, Lichtblau, and Strauss Fund for the March of the Living established by Danielle and Robert Kinstlinger in memory of their grandparents, aunts, and cousins who perished in the Holocaust
- Ravski Family Fund in memory of Perla, Jerry, and Ruth Ravski and in honor of Philip Ravski to benefit March of the Living Scholarships
- Selma and Gustav Strauss Memorial Fund, established by their daughter and grandson, Karoline Strauss Horowitz and Robert H. Horowitz
- Leon and Lillian Weinberg Fund for Support of the March of the Living
- In Memory of Martha Wolfes and the Family of Otto Wolfes who perished in the Holocaust, established by Alice and Peter Hereld
- Selma L. and Harold Yudkin Fund for the March of the Living
- Michael and Shifra Zamkov Fund for the March of the Living in memory of our parents, Aryeh Leib and Basya Chevlin and Shlomo Yaakov and Rivka Zamko

### FUNDS TO SUPPORT JEWISH PRESCHOOL SCHOLARSHIPS

- Rena and Robert Grodd Fund for Preschool Education

### OTHER FUNDS TO SUPPORT EDUCATION

- Beckerman Family Supporting Foundation Endowment Fund for the benefit of Hamden Hall Country Day School
- Donald A. Berkowitz Memorial Fund (to benefit the University of Michigan) +
- Rose B. and Barbara Gingold Fund (to benefit Brandeis University and Albert Einstein College of Medicine) +
- Marion Ullman Weinstein Scholarship Fund for Brandeis University

*Funds for Youth Education Programs in Israel are listed separately under "Funds to Support Israel"*

### FUNDS TO SUPPORT DAY SCHOOLS

#### FUNDS TO SUPPORT EZRA ACADEMY

- Elaine and Richard Ades Endowment for the Arts at Ezra Academy
- Lucille and Arnold Alderman Fund for Ezra Academy
- Beth Ann Beller Fund for Nutrition Education at Ezra Academy
- Rose and Abraham Cohen Endowment Fund for Sephardic Educational Materials at Ezra Academy
- Johnathan Adam Cooper Memorial Sports Fund for the benefit of Ezra Academy
- Johnathan Cooper Memorial Scholarship Endowment Fund
- Joan Edelstein Davenny Memorial Fund to enable Ezra Academy students to participate in Israel programs
- Ezra Academy Community One Event Fund
- Ezra Academy Israel Trip Endowment Fund
- Ezra Academy Scholarship Fund in memory of Isaac Goldberg
- Feldman Family Fund for the benefit of Ezra Academy, the Jewish High School of Connecticut, and Congregation Beth-El +
- Waynik-Larrison Gaisman Family Fund for the benefit of Ezra Academy

- Samuel and Marcella Glazer Fund for Ezra Academy
- Bess and Herman Glazer Bequest Fund for Ezra Academy
- Sam and Marcella Glazer Fund for the benefit of Ezra Academy
- Morton Goldberg Ezra Academy Endowment Fund
- Malka Levine Memorial Teacher Education Fund for the benefit of Ezra Academy
- Jechiel Mostow Scholarship for the Ezra Academy 8th-Grade Program in Israel Endowment Fund
- George G. and Leah E. Posener Elementary School at Ezra Academy Endowment Fund
- George G. and Leah E. Posener Scholarship Fund for the benefit of Ezra Academy
- Barry David Reznik Chemistry Fund for Ezra Academy
- Claire Robbins Memorial Scholarship Fund for the benefit of Ezra Academy Francis Shield Fund +
- Rose and Hy Slifer Ezra Academy Israel Trip Fund in Honor of Judy Cooper
- Beverly Zerwitz Zlotoff Scholarship Fund for the benefit of Ezra Academy

### FUNDS TO SUPPORT SOUTHERN CONNECTICUT HEBREW ACADEMY (NEW HAVEN HEBREW DAY SCHOOL)

- Beckerman Family Supporting Foundation, Inc. Endowment and Education Fund for the New Haven Hebrew Day School
- Henry and Marion Bixon Fund +
- Ruth and Jerome Gross Memorial Fund
- Komisar Family Fund +
- New Haven Hebrew Day School Endowment Fund
- New Haven Hebrew Day School Education Fund
- New Haven Hebrew Day School Community One Fund
- New Haven Hebrew Day School Community One Event Fund
- George G. and Leah E. Posener Scholarship Fund for the benefit of the New Haven Hebrew Day School elementary students in blessed memory of Rabbi Maurice Hecht
- Stanley F. and Marcia Reiter Philanthropic Fund for New Haven Hebrew Day School

### FUNDS TO SUPPORT THE HEBREW HIGH SCHOOL OF NEW ENGLAND

- Benjamin and Freda Cohen Memorial Fund for Hebrew High School of New England
- Vivian and Nathan Fink Scholarship Fund for the Hebrew High School of New England
- Hebrew High School of New England Endowment

### FUND TO SUPPORT SOLOMON SCHECHTER SCHOOL-WEST HARTFORD

- Zachs Family Fund for the benefit of Solomon Schechter School of Greater Hartford\*

### OTHER FUNDS TO SUPPORT DAY SCHOOLS

- Ida Orlin Fallman, Sophie Sylvia Orlin, and Edith Orlin Jacobs Fund (to support the Solomon Schechter School, Newton, MA)
- Komisar Family Fund (to benefit American Friends of Yeshiva D'mir, Torah Umesorah, Ezrat Torah, and Yeshivat Torah Vodath) +

### FUNDS TO SUPPORT SYNAGOGUES

#### FUND TO SUPPORT CONGREGATION BETH-EL, FAIRFIELD

- Feldman Family Fund for the benefit of Ezra Academy, the Jewish High School of Connecticut, and Congregation Beth-El +

#### FUNDS TO SUPPORT CONGREGATION BETH EL-KESER ISRAEL (BEKI), NEW HAVEN

- BEKI Cemetery Association Fund
- Saul and Hope Bell Memorial Fund for Congregation BEKI
- Eric I.B. Beller Environment Endowment Fund for the benefit of Congregation BEKI
- The Borick Family Endowment for Special Education for Youth at BEKI
- Leatrice and Richard Brodner Fund for Youth Education and Youth Activities at BEKI\*
- Congregation BEKI Religious School Endowment Fund
- Diana Friedman Opton Fund for the benefit of BEKI

- Goodwin Brothers Memorial Fund for the benefit of BEKI
- Oscar and Irma Hamburger Memorial Endowment Fund for Congregation BEKI
- Tillie Dworski Horwitz and Edward Horwitz Endowment Fund for the benefit of BEKI
- The Legacy Lchayim Fund for Congregation BEKI
- Ari Nathan Levine Memorial Fund for the Continuity of Congregation BEKI, established by his parents, Donna and Sidney Levine
- Bessie and Max Levine Children's Book Fund for Congregation BEKI
- David and Lillian Levine Endowment for People with Special Needs at Congregation BEKI
- Liora Lew Endowment for the Advancement of Youth Education and Youth Activities at BEKI
- Rabbi Murray Levine Charitable Gift Annuities
- Ben and Ruth Marks Fund for BEKI
- Gladys R. Lipkin Fund for the Congregation BEKI Hebrew School
- Charles & Violet Ludwig Fund for Congregation BEKI in honor of Jay Sokolow\*
- Lester E. and Bernice L. Margolis Fund for the benefit of BEKI
- Marvin Missan Fund for Congregation BEKI
- Morris and Sara Oppenheim Fund for Sacred Music at BEKI
- The Posener Family Memorial Fund for Congregation BEKI, established by George G. Posener in blessed memory of his wife, parents, four sisters, brother, and two precious sons
- George G. and Leah E. Posener Memorial Fund +
- George G. and Leah E. Posener Endowment Fund for the Jewish Education of Beth El-Keser Israel Youth
- Leah E. Posener and Betty D. Zelen Memorial Fund for the benefit of Congregation BEKI Sisterhood, established by George G. Posener
- George G. Posener Family Memorial Yom Kippur Breakfast Fund at Congregation BEKI, established by George G. Posener in blessed memory of his wife, parents, four sisters, brother, and two precious sons
- George G. Posener Kadima and United Synagogue Youth Fund
- Rosenkrantz Family Library Endowment Fund for the benefit of BEKI

- Irving Simon Fund for BEKI
- Batsheva Labowe-Stoll Fund for the Support of Jewish Life at BEKI
- Gilah Benson-Tilsen Fund for Youth at Congregation BEKI
- Noam Benson-Tilsen Fund for BEKI Kids at Camp Ramah
- Tova Benson-Tilsen Fund for Animal Welfare at BEKI and in Israel
- Jon-Jay Tilsen Endowment for the benefit of Congregation BEKI
- Stephen & Rachel Wizner Family Fund for Tikkun Olam at Congregation Beth El-Keser Israel\*

- 2008 Congregation Beth Shalom Rodfe Zedek Endowment Fund
- Congregation Beth Shalom Rodfe Zedek Unrestricted Reserve
- Ira B. Fink Deferred Charitable Gift Annuity
- Fink Family Fund for the benefit of Congregation Beth Shalom Rodfe Zedek
- Karen Horowitz Deferred Charitable Gift Annuity
- Jewish Federation Endowment Fund for the benefit of Congregation Beth Shalom Rodfe Zedek
- Sheldon Kutnick Visiting Scholar Fund for Congregation Beth Shalom Rodfe Zedek
- Congregation Beth Shalom Rodfe Zedek Endowment in Honor of Sandy Seidman

#### FUNDS TO SUPPORT CONGREGATION B'NAI JACOB, WOODBRIDGE

- Lucille and Arnold Alderman Fund for the benefit of Congregation B'nai Jacob
- Astrove Family Endowment Fund in Memory of Sherwin B. Nuland
- Marjorie and Norman Botwinik Fund
- Congregation B'nai Jacob Endowment Fund
- Rose and John Fox Memorial Fund for the benefit of Congregation B'nai Jacob
- Roslyn Lerner Fund in memory of Howard Lerner for the benefit of Congregation B'nai Jacob
- Samuel and Rose Merriam Fund (for the benefit of Congregation B'nai Jacob, Orchard Street Shul, JFS, the Jewish Federation of GNH, ADL, and the Jewish Cemetery Association of GNH) +
- James M. and Patricia Shure Fund for the benefit of Congregation B'nai Jacob
- Fried-Watsky Tikkun Olam Fund for the benefit of Congregation B'nai Jacob

#### FUNDS TO SUPPORT CONGREGATION BETH SHALOM RODFE ZEDEK, CHESTER

- Breitman Education Fund for Congregation Beth Shalom Rodfe Zedek
- Congregation Beth Shalom Rodfe Zedek Capital Fund
- Congregation Beth Shalom Rodfe Zedek Endowment Fund

#### FUNDS TO SUPPORT CONGREGATION MISHKAN ISRAEL, HAMDEN

- Phyllis Bauscher Charitable Gift Annuity (for the benefit of Jewish Family Service and Congregation Mishkan Israel) +
- Beckerman Family Supporting Foundation Endowment Fund for the benefit of Congregation Mishkan Israel
- Donald A. Berkowitz Memorial Fund +
- Herbert Brockman Rabbinic Endowment Fund
- Congregation Mishkan Israel Endowment Fund
- Arthur and Yvette Eder Fund for the benefit of Congregation Mishkan Israel
- Rose B. and Barbara Gingold Fund +
- Stephen and Sally Glick Fund for the benefit of Congregation Mishkan Israel
- Nathan and Hilda Kaminsky Mishkan Israel Religious School Scholarship Fund
- Robert N. and Goldythe B. Langerman Inter-marriage Fund at Mishkan Israel
- Lydia D. Levine Fund for the benefit of Congregation Mishkan Israel and the JCC +
- Postman Memorial Fund
- Gale and Michael Silverberg Fund for the benefit of the Rabbi's Endowment Fund at Congregation Mishkan Israel
- Sklarz Family Fund for the benefit of the Rabbi's Endowment Fund at Congregation Mishkan Israel
- Weisbart Family Fund for the benefit of Congregation Mishkan Israel

#### FUNDS TO SUPPORT CONGREGATION OR SHALOM, ORANGE

- Bloch Family Fund for Support of Israel Travel by Congregation Or Shalom Youth +
- Jack Evans Fund for the benefit of the Rabbi Alvin Wainhaus Discretionary Fund at Congregation Or Shalom
- Marion G. Litsky Fund for the benefit of Congregation Or Shalom
- Congregation Or Shalom Endowment Fund

#### FUNDS TO SUPPORT ORCHARD STREET SHUL, NEW HAVEN

- Samuel Faiman Tzedakah Fund
- Orchard Street Shul Endowment
- Samuel and Rose Merriam Fund (for the benefit of Congregation B'nai Jacob, Orchard Street Shul, JFS, the Jewish Federation of GNH, ADL, and the Jewish Cemetery Association of GNH) +

#### FUNDS TO SUPPORT TEMPLE BETH DAVID, CHESHIRE

- Falit Family Fund in honor of the Bar Mitzvah of Joseph E. Falit for Scholarships for Temple Beth David Youth
- Temple Beth David Endowment Fund
- Temple Beth David Jaffe Capital Construction Endowment
- Temple Beth David Philanthropic Fund
- Temple Beth David Holocaust Memorial Fund
- Temple Beth David Memorial Fund
- Temple Beth David Sommers Fund
- Temple Beth David Vallone Youth Fund

#### FUNDS TO SUPPORT TEMPLE BETH SHOLOM, HAMDEN

- Elliot Alderman Memorial Fund for Temple Beth Shalom
- Rhoda and Aaron Cohen Family Fund

#### FUND TO SUPPORT BETH ISRAEL SYNAGOGUE (WALLINGFORD)

- Beth Israel Synagogue (Wallingford) Endowment Fund for Development

#### FUNDS TO SUPPORT TEMPLE EMANUEL

- Cantor Family Fund for a Scholar in Residence and Adult Education Programs
- Kliger Family Fund for the benefit of Temple Emanuel Endowment
- Siegel Family Education Fund for Temple Emanuel
- Caryn & Lew Shaffer Fund for Temple Emanuel\*
- Temple Emanuel Endowment
- Temple Emanuel Leave a Legacy Fund

#### FUNDS TO SUPPORT WESTVILLE SYNAGOGUE, NEW HAVEN

- Jay Katz Memorial Fund for the benefit of Westville Synagogue
- Komisar Family Fund
- Marcia and Stanley F. Reiter Fund for Westville Synagogue
- Mark and Heni Schwartz Family Fund for Jewish Family Service, Westville Synagogue, and Jewish Education +
- Westville Synagogue Endowment Fund
- Zalesch Family Fund for the benefit of Westville Synagogue

\* Indicates new fund 2023

+ Indicates funds for multiple beneficiaries listed in multiple locations



## FUNDS TO SUPPORT JEWISH CAMPING

### DORON FAMILY ONE HAPPY CAMPER TESTIMONIAL

*“As a single mother, providing my son with enriching experiences like Eisner Camp, a Jewish overnight camp, has been a dream that seemed out of reach. The One Happy Camper scholarship from the Jewish Foundation has not only made this dream a reality but has also opened doors to valuable amazing friendships, life experiences, and learning opportunities for my son, Nadav. Jewish camp and the Hebrew language are very important to us and I am truly touched by the generosity and confident that the friendships and memories Nadav gains from the experiences at Eisner Camp will have a lasting impact on his life. Once again, thank you from the bottom of my heart for your kindness and support. Your scholarship is making a significant difference in our lives, and I am sincerely grateful.”*

*~ Keren Doron, Camp Parent*

## FUNDS TO SUPPORT CAMP LAURELWOOD

- Lucille and Arnold Alderman Camp Fund +
- Norman and Caron Alderman Fund for Camp Laurelwood
- Beckerman Family Supporting Foundation Camping Experience Endowment Fund for the benefit of Camp Laurelwood, JCC Day Camp, and Fresh Air Fund +
- Dr. Milton Godfried Camp Laurelwood Health Service Fund in memory of his loving wife, Gladys
- Dr. Milton Godfried Fund for Camp Laurelwood Scholarships, in memory of his loving wife, Gladys
- Richard D. and Roberta D. Grossman Camp Laurelwood Scholarship Endowment
- Bertha Konowitz Scholarship Fund for Camp Laurelwood
- Robert N. and Goldythe B. Langerman Fund for Camp Laurelwood Scholarships
- Camp Laurelwood Community Event Fund
- Camp Laurelwood Endowment Fund
- Lester E. and Bernice L. Margolis Fund for the benefit of Camp Laurelwood
- Michael Shiner Endowment Fund for the benefit of Camp Laurelwood
- Zachs Family Fund for the benefit of Camp Laurelwood, Inc.\*

## FUNDS TO SUPPORT THE JCC DAY CAMP

- Lucille and Arnold Alderman Camp Fund +
- Beckerman Family Supporting Foundation Camping Experience Endowment Fund for the benefit of Camp Laurelwood, JCC Day Camp, and Fresh Air Fund +
- Irma K. and Alvin L. Evans Jewish Community Center Camp Scholarship Fund
- Peter C. Hereld Memorial Endowment for JCC Day Camp
- Hyla and Barry Vine Fund for JCC Day Camp

## FUND TO SUPPORT CAMP RAMAH

- George G. and Leah E. Posener Fund for Tikvah Program for Special Education Needs at Camp Ramah

## OTHER JEWISH CAMPING

- The Nevas-Price Camp and Israel Scholarship

## FUNDS TO SUPPORT THE NEW HAVEN REGISTER FRESH AIR FUND CAMP

- Lucille and Arnold Alderman Camp Fund +
- Beckerman Family Supporting Foundation Camping Experience Endowment Fund for the benefit of Camp Laurelwood, JCC Day Camp and Fresh Air Fund +

## FUNDS TO SUPPORT THE JEWISH HISTORICAL SOCIETY OF GREATER NEW HAVEN

- Fisher Family Fund for Jewish New Haven +
- Jewish Historical Society of Greater New Haven Endowment Fund, established by Distinguished Members of the Jewish Historical Society: Lucille Alderman, Herbert D. Setlow, and Dr. Barry F. Herman, in memory of Louis and Helen Herman, and Lawrence S. Hirsch
- Jewish Historical Society Philanthropic Fund
- Sid and Donna Levine Fund in Memory of Morris Levine and Max Romanoff\*
- George G. and Leah E. Posener Memorial Fund +
- Barry and Hyla Vine Endowment for the Jewish Historical Society\*

## FUNDS TO SUPPORT JEWISH CEMETERIES

- Lucille and Arnold Alderman Fund for the benefit of the Jewish Cemetery Association of Greater New Haven
- Auxiliary of the Jewish Home for the Aged Endowment for the benefit of the Jewish Cemetery Association
- Beth El-Keser Israel Cemetery Association Fund
- Rhoda and Aaron Cohen Family Fund\*
- Samuel Faiman Tzedakah Fund
- Fisher Family Fund for Jewish New Haven +
- Hebrew Burial and Free Loan Association of Greater New Haven Fund
- Jewish Cemetery Association of Greater New Haven Endowment Fund
- Jason D. Kogan Endowment Fund for the benefit of Jewish Cemetery Association of Greater New Haven
- Zelda Kroogman Fund for the benefit of the Jewish Cemetery Association of Greater New Haven
- Samuel and Rose Merriam Fund (for the benefit of Congregation B'nai Jacob, Orchard Street Shul, JFS, the Jewish Federation of GNH, ADL, and the Jewish Cemetery Association of GNH) +
- New Haven Beth Israel Cemetery Association Fund

- Saltzman Family Fund for the benefit of the Jewish Cemetery Association of Greater New Haven
- James M. Shure Family Endowment for the Jewish Cemetery Association of Greater New Haven
- Barry and Hyla Vine Family Endowment for the benefit of Jewish Cemetery Association of Greater New Haven
- Workmen's Circle Branch #10 Endowment Fund

## FUND TO SUPPORT HEBREW LOAN ASSOCIATION

- Hebrew Burial and Free Loan Association Fund

## FUND TO SUPPORT NEW HAVEN BETH ISRAEL (ORCHARD STREET SHUL) CEMETERY

- New Haven Beth Israel Cemetery Association Fund

## FUNDS TO SUPPORT THE ANTI-DEFAMATION LEAGUE (ADL)

- Lucille and Arnold Alderman Fund for the benefit of the ADL
- Beckerman Family Endowment Fund for the benefit of the Connecticut ADL
- Sidney and Arthur Eder Fund for the benefit of the Connecticut ADL
- Suzanne Hecht Endowment to support Confronting Anti-Semitism
- Samuel and Rose Merriam Fund (for the benefit of Congregation B'nai Jacob, Orchard Street Shul, JFS, the Jewish Federation of GNH, ADL, and the Jewish Cemetery Association of GNH) +
- Stephen L. Saltzman Fund for the support of the ADL Holocaust Education Program

## FUNDS TO SUPPORT THE ARTS

- Cecle Adler Music Scholarship Fund
- Beckerman Family Endowment for the Shubert Theater
- Emily Fine and Stephen Stein Fund for Musical Enrichment in the Jewish Community in memory of Irving Fine
- Sidney and Arthur Eder Fund for the benefit of the Arts Council of Greater New Haven

*Funds to Support the Arts at Local Jewish Agencies and Synagogues are listed under those organizations*

## FUNDS TO SUPPORT THE BOY SCOUTS

- Lucille and Arnold Alderman Fund +
- David Silver Family Fund for support of Boy Scouts of America
- Troop #41 Boy Scouts of America Fund
- Funds to Support the United Way
- Donald A. Berkowitz Memorial Fund +
- Komisar Family Fund +

## FUNDS TO SUPPORT MEDICAL RESEARCH AND HOSPITALS IN THE UNITED STATES

- Lucille and Arnold Alderman Fund to benefit The Leukemia and Lymphoma Society of America Hospital of St. Raphael for the benefit of Father Michael J. McGivney Center for Cancer Care, and Yale New Haven Hospital for the benefit of Pediatric Hematology
- Lucille and Arnold Alderman Fund for the benefit of Sister Ann Virginie Grimes Health Center at St. Raphael's Hospital
- Henry and Marion Bixon Fund (to support Children's Hospital – Yale New Haven Hospital)

## FUNDS TO SUPPORT COMMUNITY AWARDS AND EDUCATION

- Murray Gallant Memorial Scholarship Fund for Professional Development
- Sydney A. Perry Fund for Jewish Learning and Leadership
- Robert R. Eisner Award Fund
- Yitzhak Rabin Fund for Peace and Human Relations

## OTHER FUNDS

- Lucille and Arnold Alderman Fund (to benefit the World Wildlife Fund, the Wildlife Conservation Society, and the Peabody Museum of Natural History at Yale University) +
- Lucille and Arnold Alderman Fund for the benefit of the Auschwitz Jewish Center
- Lucille and Arnold Alderman Fund for the benefit of Clifford Beers Clinic
- Lucille and Arnold Alderman Fund for the benefit of LEAP
- Lucille and Arnold Alderman Fund for Planned Parenthood
- American Friends of Leo Baeck College Fund
- Andrew Eder Family Fund for Leadership and Scholarship

- Ashley Jewish Homesteaders Cemetery Preservation Fund
- Bobrow Family Fund for Jewish New Haven
- The Paul Burger Fund for the benefit of Wings Industry Network, Inc.
- Fran Burger Philanthropic Fund
- Hibuki International, Inc.\*
- Daughters of 1853 Nursing Scholarship Fund
- Sidney and Arthur Eder Fund for the benefit of Juvenile Diabetes Research Fund International
- Eva Gronner Fund for the benefit of the U.S. Holocaust Memorial Museum
- Susan E. & Dr. Stuart Jacobson z'l Endowment in memory of our parents Harry Aaron & Rebecca Govrin Jacobson\*
- Komisar Family Fund (to benefit Union of Orthodox Congregations and Kosher Kitchen at Yale University) +
- Hinda and Alan Massey Mitzvah Fund
- George G. and Leah E. Posener Memorial Fund (to benefit Yale NHH, Connecticut Freemasons Foundation, Milford Hospital, and Temple Beth El)
- Rogol Family Fund
- Saltzman Family Fund for Downtown Evening Soup Kitchen\*
- Herbert Setlow Fund for the benefit of B'nai B'rith Housing
- Seymour Yudkin Fund for the International Rescue Committee
- Ann Weiner Memorial Art Fund
- Marian Fox Wexler Charitable Gift Annuity to support Hadassah

## FUNDS TO SUPPORT ISRAEL

- The Israel Endowment Fund
- Earl and Muriel Banquer Israel Endowment Fund

## FUNDS TO SUPPORT YOUTH PROGRAMS AND TRAVEL IN ISRAEL

- Birthright Israel Endowment Fund
- Bloch Family Fund for Support of Israel Travel by Congregation Or Shalom Youth +
- Department of Jewish Education TIES Program Fund
- Esther Gold Milikowsky-Copelon Fund in memory of Matthew Milikowsky for Teen Travel to Israel
- Marvin S. Pisetsky Israel Scholarship Endowment Fund
- Arthur Spiegel Israel Scholarship Fund
- Lawrence and Florence Winer Israel Scholarship Fund

## FUNDS TO SUPPORT SCHOLARSHIPS

- Stuart J. Drell Scholarship Fund
- Emma Kohn Podoloff Scholarship of the Greater New Haven Section of the National Council of Jewish Women
- Vine Family Scholarship Fund

## FUNDS TO SUPPORT ISRAELI ORGANIZATIONS

- Ben and Freda Cohen Memorial Fund for Friends of Yad Sarah
- Rose B. and Barbara Gingold Fund (to benefit the American Friends of the Weizmann Institute of Science, the American Friends of the Technion Institute, and the American Friends of Hebrew University) +
- Henry and Marion Bixon Fund (to benefit Hadassah Medical Organization) +
- Edna Zusman and Zelda Kroogman Fund for American Friends of the Weizmann Institute of Science
- Tova Benson-Tilsen Fund for Animal Welfare at BEKI and in Israel +

## FUNDS TO SUPPORT UCONN HILLEL

- Lawrence Handler UConn Hillel Fund
- UConn Hillel Endowment Fund
- Zachs Family Fund for the benefit of the B'nai B'rith Hillel Foundation (UCONN Hillel)\*

## FUNDS TO SUPPORT BBYO

- BBYO Fund for the Future
- Kenneth and Mara Ginsberg Family Fund for the benefit of BBYO

## FUND TO SUPPORT JFACT

- The JFACT Fund, Inc.

## FUNDS TO SUPPORT FRIENDS OF JEWISH HERITAGE POLAND, INC.

- Krosniewice Jewish Cemetery Fund in memory of Sol Rosenkranz\*
- Saltzman Family Fund to support Friends of Jewish Heritage Poland, Inc.\*

\* Indicates new fund 2023

+ Indicates fund for multiple beneficiaries listed in multiple locations

# STAR OF DAVID SOCIETY

The Star of David Society is a national program of the Jewish Federations of North America that honors outstanding philanthropists who have created a PACE or LOJE gift (an endowment fund that perpetuates a Federation donor's Annual Campaign gift) of \$200,000 and/or other permanent endowments of \$500,000 or more with their local Jewish Foundation. New Haven Star of David Society members are:

- Lucille and Arnold Alderman
- Ruthann z'l and David A. Beckerman
- Harvey Bixon
- Benjamin and Freda Cohen z'l
- Irving Eckhardt z'l
- Sidney and Arthur Eder z'l
- Yvette and Arthur Eder z'l
- Rose Gingold Charitable Trust
- Gladys and Milton Godfried z'l
- Estate of Irma Hamburger
- Betsy S. Hoos
- Jeffrey C. Hoos
- Marcia Reiter
- Stephen Saltzman
- Shirley Scholder
- Estate of Hannah and David Surasky
- Barry and Hyla Vine
- Seymour Yudkin z'l

## UNRESTRICTED FUNDS

- Anonymous
- Ades Family Fund
- Doris Alpert Memorial Fund
- Alpha Omega Dental Society Fund
- Gertrude Amidai Fund
- Ruthann Beckerman Special Birthday Fund
- Stanley and Lillian Bergman Fund
- Stanley Berwald Fund
- Betty Lou and Joseph Blumberg 50th Anniversary Fund
- Dr. Edward J. and Adele C. Blumenthal Fund
- Marjorie and Norman Botwinik Fund
- Jerry Braun Memorial Fund
- Bernard and Bella Braverman Fund
- Bernard Brody Memorial Fund
- Milton I. and Patricia S. Caplan Unrestricted Fund
- Ruth Caplan Special Birthday Fund
- Catlin Foundation
- Benjamin and Freda Cohen Memorial Fund for the Jewish Foundation of Greater New Haven
- In Memory of Steven L. Cohen by his parents, Jack D. and Miriam C. Cohen
- Pearl and Donald Cohen Fund
- Rose R. Cohen Memorial Fund
- Richard Cooper Fund in honor of his 60th birthday
- Coradino Holocaust Fund
- The Susan Dorfman Fund in honor of her recovery
- Ethel Eckhardt Fund
- The Eckhardt Family Fund in Memory of Nathan and Ida Eckhardt
- The Harvey Eckhardt Family Fund in Memory of Ann and Samuel Eckhardt
- Arthur and Yvette Eder Endowment Fund
- Marvin Eisenberg Memorial Fund
- Audrey Eisenstadt Memorial Fund
- Betty A. Ellis Memorial Fund
- Alvin & Irma Evans in memory of Louis & Anna Kornick and Samuel & Mary Evans\*
- The Fearer Family Fund
- The Carl and Joyce Feen Family Fund
- Fisher Family Fund for Jewish New Haven +
- John and Rose Fox Memorial Fund
- Lewis L. and Elaine L. Friedland Fund
- Blanche Friedman Memorial Fund
- In Memory of Murray Gallant
- Suzanne and Murray Gallant Simcha Fund
- Bane and Bertha Gallin Fund
- Lillian Gandelman Endowment Fund
- Herbert I. Geisinger Fund
- Carl Gesund Memorial Fund
- Rose Gingold Memorial Fund
- In Memory of George A. and Mattie L. Ginsburg
- Herman and Bessie G. Glazer Fund
- Dr. Morris Glazer Memorial Fund
- Lindy Lee Gold Fund
- Harry's Birthday Fund\*
- Rita Greenberg Gold Birthday Fund
- Florence Bandler Goodman Memorial Fund
- Paul and Claire Goodwin Fund
- Carole and Harold Greenbaum Family Fund
- Alvin Greenberg Fund
- Barbara Greenberg Special Birthday Fund
- Mildred and George Groobert Fund
- Elizabeth Hamburger Memorial Fund
- Rita and Herbert Hershenson Fund
- Hoos Family Fund
- Doris and Paul Isacoff Fund
- Florence Isenberg Unrestricted Fund
- Theodore Janos Memorial Fund
- Jordan Joseph Simcha Fund
- Eva Katzman Memorial Fund
- Louis and Beatrice Kaye Unrestricted Fund
- Frank Kellert Fund
- Dr. Robert Kinstlinger Birthday Fund
- Esther G. Koletsky Memorial Fund
- Jack Konowitz Memorial Fund
- Harry W. and Charlotte Labov Fund
- Helaine Lender Milestone Birthday Fund

- Arnold and Celia Lerner Fund
- Morris Levitin Memorial Fund
- Martha Libby Memorial Fund
- Ruth and Theodore Lidz Fund
- Leo Links Memorial Fund
- Reva and Simon Liveten Fund
- Janet and Dennis Magid Memorial Fund for their parents
- J. and R. Malach Holocaust Memorial Fund
- Ben and Ruth Marks Fund
- Frances R. Merriam Endowment Fund
- Sam and Rose Merriam Fund
- Ruth Novenstein Memorial Fund
- Berta and Lawrence Perkins Endowment Fund
- William H. Prusoff Fund
- Francis Regelson Memorial Fund
- Carol Robbins Milestone Birthday Fund
- Dr. Frederick L. Sachs Memorial Fund

- Leah Sachs Memorial Fund
- Louis Sachs Memorial Fund
- Beatrice Sakowitz Fund
- Sidney and Betsy Savelle Endowment Fund
- Gloria Schaffer Endowment Fund
- Scheps Family Simcha Fund
- Shirley F. Scholder Endowment Fund
- Kurt, Trude, and Peter A. Schreiber Memorial Fund
- Barnett and Ida Senderoff Memorial Fund
- Mark and Deborah Sessel Young Leadership Award Fund
- The Seton Tzedakah Fund
- Leonard Shechtman Memorial Fund established by his wife, Karen Stelzer Shechtman
- Cecile and Richard Sheramy Fund
- Susan Fromm Shimelman Fund
- Hahn Silberberg Family Fund
- Sidney S. and Marion B. Silverberg Memorial Fund

- Lois Roth Smirnoff 80th Birthday Fund
- Nathan Sosensky Memorial Fund
- Stanger Colodner Family Fund
- Louis G. Stein Memorial Fund
- Shirley Steinman Memorial Fund
- Adolph, Ruth, and Elizabeth Stelzer Memorial Fund, established by their daughter, Karen Stelzer Shechtman
- Daniel I. Rose Sinder Unrestricted Fund
- Daniel and Rose Smolen Unrestricted Fund
- Marion C. Stein Unrestricted Fund
- David and Hannah Surasky Fund
- Robyn Jo Hoos Teller Fund
- The Teplitzky Family Young Leadership Fund
- Lilyan and Maurice Ullman Fund
- Barry and Hyla Vine Family Endowment Fund
- Vlock Family Foundation
- Mary Lou and Edward Winnick Endowment Fund
- Seymour Yudkin Memorial Fund

# WOMEN OF VISION & WOMEN OF VISION TOO



The Women of Vision Society was created in 1996 in order to ensure that a permanent, restricted endowment fund would forever be available to enhance the quality of life for Jewish women and their families in Greater New Haven. One hundred women contributed \$1,000 each to establish the original endowment, from which grants have been made annually since 1998.

The Women of Vision Society Too initiative was launched in 2002 to allow additional members of the community the opportunity to help increase the monies available for grants that support scholarships for Jewish women to study in Israel or do graduate work in a Jewish-related subject, speakers for Jewish women's programming, and projects of concern to the Jewish home and family. Since 1998, over **\$236,000** in grants have been distributed.

- Anonymous
- Elaine Ades
- Betsy Adler
- Cecle Adler
- Caron Alderman
- Lucille Alderman
- Judy Alperin
- Darcy McGraw Altman
- Mira Arbonies
- Diane Ariker
- In Honor of our daughter, Lauren Ariker Korman, by Diane & Walter Ariker
- In Honor of our daughter-in-law, Shani Ariker, by Diane & Walter Ariker
- Sara Ann Auerbach
- Judith August
- Joan Bailey
- Debbie Brander Barbieri
- Betsy Barnston
- Chana Baron
- Judith Barr
- Jennifer Bayer
- Ruthann Beckerman
- Abby Bench
- Sharon Bender
- Barbara Berg
- Ina Berson
- Susan Birke-Fiedler
- Civianne Bloch
- Sarah Blum

- Marjorie Botwinik
- Elaine Braffman
- Charlotte Brenner\*
- Phyllis Brodoff
- Susan Buxbaum
- Laura Campbell
- Linda Cedarbaum
- Elaine Chapman
- Roslyn Chosak
- Roxanne Coady
- Gloria Cohen
- Linda Cohen
- Nancy Cohen
- In Honor of my granddaughter, Danielle Epstein, by Nancy Cohen
- In Honor of my granddaughter, Jill Epstein, by Nancy Cohen
- Linda Friedman Cole
- Emily Resnik-Conn
- Harriet Cooper
- Joanna Cooper
- Judy Cooper
- In honor of my daughters, Sharon Moger and Leslie Gold, by Judy Cooper
- Esther M. Copelon
- Ann Drobnis
- Elizabeth Edelglass\*
- Eileen Eder
- Yvette Eder
- Jody Ellant
- Arlene Elovich
- Debra Epstein
- Linda Cohen Epstein
- Ruth Fagen
- Harriet K. Fast
- Emily Fine
- Marilyn Fishbone
- Betsy Gandelman Fiske
- Betsy Flaherty
- Joanne Foodim
- Linda Friedman
- Nancy Frydman
- Suzanne Gallant
- Lillian Gandelman
- Deb Gaudette

- Dorothy Giannini-Meyers
- Pat Ginsberg
- Bess Glazer
- Miriam Glenn
- Eve Gold
- Lindy Lee Gold
- Bonnie K. Goldberg
- Carole Greenbaum
- Barbara Greenberg
- In Honor of Barbara Greenberg, a real Woman of Vision, by Ruthann Beckerman
- Doris Greenberg
- Evelyn Greenblatt
- Marjorie Greenblatt
- Ruth Greenblatt
- Linda Greenhouse
- Rena Grodd
- Velma Grodd
- Roberta Grossman
- Taube Gurland
- Judi Hahn\*
- Lisa Harding
- Lauren Hass
- Ronda Hendel
- Rita Hershenson
- Claudia Heyman
- Marjorie Hirshfield
- Gloria Hoder
- Amy Holtz
- Betsy Hoos\*
- Jennifer Rachel Hoos
- Michele Faye Hoos
- Stephanie Hyla Hoos
- Miriam Horowitz
- Phyllis Horton
- Dale Hurwitz
- In tribute to the memory of my brother, Dr. Edward Goodruff Steinlauf, by Heidi Hurwitz
- Teddy Hurwitz
- Dorothy Hyatt
- Caroline M. Jacobs
- In loving memory of my mother, Rebecca Govrin Jacobson, by Susan E. Jacobson
- Bertha Kahn
- Lisa Kapp

- Iny Karp
- Barbara Katz
- Marni Smith Katz
- Carol Kaufman
- Susan Kaufman
- Rosalyn Kaye
- Sandy Kerzner
- Danielle Kinstlinger
- Elaine Klein
- Judy Kleinstein
- Caryl Kligfeld
- In loving memory of Florence Ratner Klugman by her daughter, Marilyn Fishbone
- Alison Kogan
- Nurit Kohl
- In loving memory of Bertha Konowitz by her son, Ed Konowitz
- Jackie Koral
- Robin Kramer
- Evelyn Krevolin\*
- Shirley Kroopnick
- Elaine Lawson
- Cindy Leffell
- Helaine Lender
- Margaret Lerner
- Roslyn Lerner
- Ruth Lesser
- Diane Levey
- Lydia Levine
- Betty Levy
- Beverly Levy
- Perri Levy
- Barbara Lichtman
- Loretta G. Lipka
- Roberta Litvinoff
- Jan Magid
- Robin Malkus
- Amy Margolis
- Bernice Margolis
- Joan Glazer Margolis
- Marilyn Margolis
- Darcy Marks
- Mary Mathog
- Rebecca Meyer
- Roslyn Meyer

- Barbara Jean Miller
- Lauren Miller
- Harriett Miller
- Sandra Milles
- In memory of my loving mother, Elizabeth H. Goldsmith, by Judith G. Naden
- Susan Naiman
- Ann Nishball
- Nancy Olins
- Barbara Green Orell
- Ruth Ostfeld
- Debra Reiter Panitch
- Melissa Perkal
- Danya Perry
- Sarah Perry
- Sydney A. Perry
- Madeline Potash
- Jo-Ann Price
- Rachel Ranis
- Hyla Raphael
- In loving memory of Yetta Waldman Ratner by her granddaughter, Marilyn Fishbone
- Marcia Reiter
- Lillian Resnik
- Carol Robbins
- Patricia Rogovin
- Lynda Rosenfeld
- In loving memory of Marilyn Rosenfield by her daughter, Andrea and Ed Konowitz
- In Honor of my granddaughter, Samara Rozen, by Nancy Cohen
- Stacey Cohen Rozen
- Diane Daskal Ruben
- Lynn Rudich
- Jane Rudner
- Ruth Sachs
- Gloria Sack
- Mary Beth Saltzman
- Emily Sandberg
- Betsy Savelle
- Linda Savitsky
- Ellen Scalettar
- Leslye Schaefer
- Lorrie Schaefer
- Gloria Schaffer

- Enid Scheps\*
- Shirley Scholder
- Lynne Schpero
- Cheryl Schwartz
- Dana Schwartz
- Heni Schwartz
- Judith Schwartz
- Marlene Schweitzer
- Barbara Segaloff
- Jodi Seidner
- Cis Serling
- Deborah Sessel
- Holli Shanbrom
- Harriet Shapiro
- Phyllis Shapiro
- Jane Webber Shernow
- Pattie Shure
- Meryl Silver
- Ina Silverman
- Carol Sirot
- Judy Sklarz
- Judy Skolnick\*
- Susan Skope
- Gayle Slossberg
- Lois Smirnoff
- Lois Spivack
- Lisa Stanger\*
- In tribute to the memory of my brother, Dr. Edward Goodruff Steinlauf, by Marcie S. Sugarmann
- Shirley Stephson
- Betsy Stern
- In loving memory of Florence Ginzberg Supowitz by her daughter, Barbara Greenberg
- Janice Sussman
- Robyn Teplitzky
- Doreen Testa
- In loving memory of her husband, Andrew H. Testa, by Doreen Testa\*
- Rebecca Tishkoff
- Shirley Trachten
- Stacey Trachten
- In Honor of my mother, Bernice Michel Goldberg, by Hyla G. Vine
- In Honor of my daughter, Glenna Jillian Vine, by Hyla G. Vine

- In Honor of my daughter, Ilana Michel Vine, by Hyla G. Vine
- In loving memory of my mother-in-law, Lillian E. Vine, by Hyla G. Vine
- Hyla G. Vine
- Gail Brekke Vlock
- Karen Vlock
- Laurel Vlock
- Sandra Vlock
- Helen Vogel
- Laury Alderman Walker
- Joan Wallack
- In Honor of my daughter, Lisa Fishbone Wallack, by Marilyn Fishbone
- Barbara Wareck
- Lillian Weinberg
- Elise Weiner
- Martha Sue Weisbart
- Marian Wexler
- Ana White
- Esther White
- Mary Lou Winnick
- Marcia Witten
- Liz Wolpert
- Leslie Zackin
- Pearl Zale
- Ariel Zohar

\* Designates a woman who has made an additional commitment to the endowment

\*\* Designates a new Woman of Vision as of December 31, 2023

To learn more, please contact Beth Kupcho at [bkupcho@jewishnewhaven.org](mailto:bkupcho@jewishnewhaven.org)



# THE JEWISH FOUNDATION'S BUILD A TZEDAKAH FUND PROGRAM

Build A Tzedakah, a Jewish Foundation of Greater New Haven initiative, encourages philanthropy at a young age. The Jewish Foundation is excited to introduce My Very Own Tzedakah, a new branch of Build a Tzedakah that encourages philanthropy at even the earliest of ages. B'nei Mitzvah Families, friends, and loved ones can make a \$600 contribution (minimum amount) which receives a \$400 match from an anonymous community donor, thus establishing a \$1000 charitable fund, at the Jewish Foundation, for the young adult. Every December, the young adult may distribute funds to chosen charities or causes that are meaningful to them. The goal is to foster a lifelong commitment to giving back and creating a positive impact on the community.

Over the past 15 years, Build a Tzedakah funds have distributed over \$80,000 to more than 80 organizations!

## MARLEY ALEXANDRA BLOOM BUILT A TZEDAKAH

*"On Saturday, November 27, 2021, our daughter, Marley Alexandra Bloom, became a bat mitzvah at Beth El Temple in West Hartford. Marley was surrounded by her friends and family and led the congregation in the week's Torah portion. To say we are proud of her is an understatement. Another reason to be proud of her is how she is using some of the money she received from friends and family to open a fund at the Jewish Foundation of Greater New Haven. Marley is excited to continue her connection to the Jewish community by being able to give to organizations that align with her principles." -Michael Bloom, Marley Bloom's father.*

Learn more and open a fund at [newhavenjewishfoundation.org/bat](https://newhavenjewishfoundation.org/bat) or scan the QR code.



## BUILD A TZEDAKAH FUNDS

- The AOK Fund
- Jonathan Agin Tzedakah Fund
- Matthew Agin Tzedakah Fund
- Alejandro Alderman Tzedakah Fund
- Nathaniel Carlos Alderman Tzedakah Fund
- Gabrielle Arons Tzedakah Fund
- Zachary Arons Tzedakah Fund
- Ariel Astrachan Tzedakah Fund
- Lital Avni-Singer Tzedakah Fund
- Nati Avni-Singer Tzedakah Fund
- Ethan Bayer Tzedakah Fund
- Karley Madison Bayer Tzedakah Fund
- Samuel Boaz Bayer Tzedakah Fund

- Noah Amichai Bayer Tzedakah Fund
- Alex Bell Tzedakah Fund
- Jonathan Bell Tzedakah Fund
- Jessica Sarah Bell Build a Tzedakah Fund
- Heddy Ben-Atar Tzedakah Fund
- Daniel Ben-Atar Tzedakah Fund
- Amy Elizabeth Bender Tzedakah Fund
- Joshua Ethan Benjamin Tzedakah Fund
- Ryan Zitser Benjamin Tzedakah Fund
- Al Berkowitz and Jack Chasnoff Tzedakah Fund
- Jason Scott Bitterman Tzedakah Fund
- Abigail Blas Tzedakah Fund
- Daniel Blas Tzedakah Fund

- Marley Alexandra Bloom Tzedakah Fund\*
- Alexa Paige Buxbaum Tzedakah Fund
- Jaden Martin Buxbaum Tzedakah Fund
- Zachary Campbell Tzedakah Fund
- Children of Temple Beth David Tzedakah Fund
- Samantha Sue Cohen Tzedakah Fund
- Matthew Cohen Tzedakah Fund
- Stephanie Lynn Cohen Tzedakah Fund in memory of Jack and Muriel Cohen
- Brandon Scott Cohen Tzedakah Fund in memory of Jack and Muriel Cohen
- Liora Cohen-Fraade Tzedakah Fund
- Nathaniel N. Cohen-Fraade Tzedakah Fund



Michael, Allison, & Marley Bloom

- Sophia Colodner Tzedakah Fund
- Jeremy S. Conn Tzedakah Fund
- Jordan R. Conn Tzedakah Fund
- Jaron Demsky Tzedakah Fund
- Rebecca Beth Eisenberg Build a Tzedakah Fund
- Samuel Eisenberg Tzedakah Fund
- Andrew Felton Charitable Tzedakah Fund
- Lauren Elias Tzedakah Fund
- Lucas Felberbaum Tzedakah Fund
- Yaffah Nessyah Ferber Tzedakah Fund
- Jacob Daniel Feuerstein Tzedakah Fund
- Joshua Thomas Feuerstein Tzedakah Fund
- Scott Albert Feinberg Tzedakah Fund
- Elizabeth Fiedler Tzedakah Fund
- Adam Joshua Fleischman Tzedakah Fund
- Julie Fleischman Tzedakah Fund
- Samantha Fleischman Tzedakah Fund
- Zoe Paige Fleischman Tzedakah Fund
- Rachel Forbes Tzedakah Fund
- Amanda Rachel Fox Tzedakah Fund
- Marissa L. Friedman Tzedakah Fund
- Stacy I. Friedman Tzedakah Fund
- Eva and Miriam Gerber Tzedakah Fund
- Dana M. Furst Build a Tzedakah Fund
- Jenna Goldberg Tzedakah Fund
- Sophia Berg Golden Tzedakah Fund
- Emma Golub Tzedakah Fund
- Rachel H. Green Tzedakah Fund
- Alexander William Greenhouse Tzedakah Fund
- Jack Gordon Greenhouse Tzedakah Fund
- Jacob M. Guglin Tzedakah Fund
- Jordan Hass Tzedakah Fund
- Ethan Hass Tzedakah Fund
- Samantha Joy Hass Tzedakah Fund
- Rebecca Hendel Build a Tzedakah Fund
- Benjamin Hendel Build a Tzedakah Fund
- Andrew Heyman Tzedakah Fund
- Matthew and Jenny Heyman Tzedakah Fund
- Aaron Hirsch Tzedakah Fund in honor of his great-great-aunt, Esther Gilbert
- Stephanie Hoos Tzedakah Fund
- Asher Hootnik Tzedakah Fund
- Jonah Perry Hootnik Tzedakah Fund
- Daniel Humphrey Tzedakah Fund
- Adam Jacoby Tzedakah Fund
- Sarah Kahn Tzedakah Fund

- Eva Kerman Tzedakah Fund
- Nathaniel E. Kerman Fund
- Andrew Perry Kingsley Tzedakah Fund
- Daniella Perry Kingsley Tzedakah Fund
- Jacob Perry Kingsley Tzedakah Fund
- David Alex Kramer Tzedakah Fund
- Jessie Lynn Kramer Tzedakah Fund
- Jamie Lyn Kramer Build a Tzedakah Fund
- Richard Kramer Tzedakah Fund
- Mathew Kramer Tzedakah Fund
- Ilana Rachel Levine Tzedakah Fund
- Joshua Seth Levine Tzedakah Fund
- Sarah Lewis Bat Mitzvah Fund
- Lirtzman-Sivkin Tzedakah Fund
- Jesse Lirtzman-Sivkin September 11th Fund
- Talya Mandelkern Tzedakah Fund
- Micah Margolis Tzedakah Fund
- The Mike Fund
- Forrest Miller Tzedakah Fund
- Jacqueline Walmsley Miller Tzedakah Fund
- Henry Max Novick Tzedakah Fund
- Matthew Grant Olins Tzedakah Fund
- Josh Orell Tzedakah Fund
- Elizabeth Jackson Perkins Tzedakah Fund
- Matthew Perkins Tzedakah Fund
- Nicholas Perkins Tzedakah Fund
- Jim Perkins Tzedakah Fund
- Mark I. Pinkert Tzedakah Fund
- Daniel Pinkert Build a Tzedakah Fund
- Aaron Plotke Tzedakah Fund
- Benjamin Pollak Tzedakah Fund
- Rebecca Celia Ravski Tzedakah Fund
- Ariel Rock Tzedakah Fund
- David and Sonia Rosenholtz Tzedakah Fund
- Corey Rosenholtz Fund
- Samuel Rosier Tzedakah Fund
- Hannah Shirley Rosner Tzedakah Fund
- Daniel Birdwhistell Rothberg Tzedakah Fund
- Jason Birdwhistell Rothberg Philanthropic Fund
- Samyomi Fund
- Jonathan Hall Schaefer Tzedakah Fund
- Dylan Joshua Schatz Tzedakah Fund\*
- Kaitlyn Ashley Schatz Tzedakah Fund
- Ryan Jacob Schatz Tzedakah Fund
- Caroline Schiff Tzedakah Fund
- Hannah Pearl Mervine-Schiff Tzedakah Fund

- Sophie Mervine-Schiff Fund
- Elyse Mara Schoenfeld Tzedakah Fund
- Allison Schwartz Tzedakah Fund
- Corey Schwartz Bar Mitzvah Fund
- Jonathan Schwartz Build a Tzedakah Fund
- Devorah Leah Seidel Tzedakah Fund
- Ana Sirota Tzedakah Fund in Honor of Oliver Stevens
- Elizabeth Skalka Tzedakah Fund
- Rachel Skalka Tzedakah Fund
- Shai Moshe Sokolow Silverman Tzedakah Fund
- Jeremy Slossberg Tzedakah Fund
- Jacob A. Stern Tzedakah Fund
- Miriam Stern Tzedakah Fund
- Elijah Labowe-Stoll Tzedakah Fund
- Jaden Nathaniel Labowe-Stoll Tzedakah Fund
- Katya Labowe-Stoll Tzedakah Fund
- Ari Ross Sussman Fund
- Eve Lily Sussman Tzedakah Fund
- TACT (Teens Acting for Community) Tzedakah Fund
- Raz Tal Tzedakah Fund
- Jacob Teplitzky Tzedakah Fund
- Marlee Sue Teplitzky Tzedakah Fund
- Molly Yael Teplitzky Tzedakah Fund
- Taylor Beth Teplitzky Build a Tzedakah Fund
- Max Trachten Build a Tzedakah Fund
- Perry Trachten Build a Tzedakah Fund
- Samantha Trachten Tzedakah Fund
- Kelly Udelsman Tzedakah Fund
- Ilana Michel Vine Build a Tzedakah Fund
- Glenna Jillian Vine Build a Tzedakah Fund
- Laura Visochek Tzedakah Fund
- Allan Visochek Tzedakah Fund
- Steven Wasserman Tzedakah Fund
- Ben Watsky Tzedakah Fund
- Rebecca E. Watsky Tzedakah Fund
- Lauren Wein Tzedakah Fund
- Joni Weintraub Tzedakah Fund
- Sasha Weitzman Tzedakah Fund
- Jason White Tzedakah Fund
- Lauren Wiznia Tzedakah Fund
- Samuel Louis Yardeni Fund for Special Needs
- Michelle Zackin Build a Tzedakah Fund
- Beverly Zlotoff Memorial Tzedakah Fund

\* Indicates new fund 2023

# GOVERNANCE

As of December 31, 2023

## EXECUTIVE COMMITTEE

- Scott Hurwitz, Chair
- Eric Green, Vice-Chair
- Craig Sklar, Investment Chair
- Eric Hendlin, Treasurer
- Lewis Shaffer, Governance Chair
- Linda Caplan, Development Chair
- Doug Skalka, Appointee
- David Trachten, Appointee

## BOARD OF TRUSTEES

- Scott Hurwitz, Chair
- Nan Birdwhistell
- Linda Caplan, Development Chair
- Josh Erlanger
- Eric Green, Vice-Chair
- Glen Greenberg
- Erica Gross
- Eric Grubman
- David Hass
- Eric Hendlin, Treasurer
- Norman Kaplan
- Jacqueline Koral
- Sara Nuland
- Marc Olins
- Michael Price
- Linda Randell
- Lewis Shaffer, Governance Chair
- Doug Skalka
- Kal Watsky

## ADVISORY

- Gerry Barker, Federation President
- Gayle Slossberg, Federation CEO

## EX-OFFICIO

- Rabbi Benjamin Scolnic, Board of Rabbis Appointee
- Steve Fleischman, Federation Immediate Past President

## EX-OFFICIO/PAST CHAIRS

- Steve Fleischman
- Betsy Hoos, LOJE Chair
- Jeffrey Hoos
- Steve Glick
- John Levy
- Stephen Saltzman
- Mark Sklarz
- Craig Sklar, Investment Chair and Jewish Elderly Grants Chair
- David Trachten

## INVESTMENT COMMITTEE

- Craig Sklar, Committee Chair
- Steve August
- Betsy Barnston
- Elon Boms
- Kevin Fox
- Joshua Kampf
- Paul Schatz
- Rabbi Benjamin Scolnic
- Lewis Shaffer
- Mark Sklarz
- Ken Spitzbard
- Iain York

## FINANCE COMMITTEE

- Eric Hendlin, Treasurer
- Erica Gross
- Marc Olins

## GOVERNANCE COMMITTEE

- Lewis Shaffer, Committee Chair
- Erica Gross
- Linda Randell
- Mark Sklarz

## JEWISH ELDERLY GRANTS COMMITTEE

- Craig Sklar, Committee Chair
- Nan Birdwhistell
- Jocelyn Hurwitz
- Betsy Hoos
- Ken Sandberg

## WOMEN OF VISION SOCIETY GRANTS COMMITTEE

- Nancy Cohen, Women of Vision Committee Chair
- Diane Ariker
- Sara Ann Auerbauch
- Debbie Barbieri
- Lauren Hass, President of Women of Vision
- Emily Resnik-Conn
- Robin Malkus
- Marni Smith Katz
- Emily Sandberg
- Susan Skope
- Cis Serling

## SCHOLARSHIP COMMITTEE

- Stacy Dworkin
- Cindy Leffell
- Sarah Nuland

## MARKETING COMMITTEE

- Marty Cobern
- Suzanne Frisch
- Eric Green
- Scott Hurwitz
- Jacqueline Koral
- Michael Price
- Larry Shanbrom

## CREATE A JEWISH LEGACY COMMITTEE

- Suzanne Frisch, Committee Chair
- Deb Gaudette
- Sarah Greenblatt

## JEWISH FOUNDATION PROFESSIONALS

- Lisa Stanger, J.D., LL.M., Executive Director
- Sarah Domena, Marketing and Communications Director
- Tiberius Halai, Grants and Gifts Manager
- Beth Kupcho, Director of Scholarship and Philanthropy
- Stephanie Licsak, Controller
- Tamara Schechter, Create a Jewish Legacy Manager

## JEWISH FEDERATION CEO

- Gayle Slossberg

# BARKING UP THE RIGHT TREE: OUR TEAM AND THEIR FUR BABIES



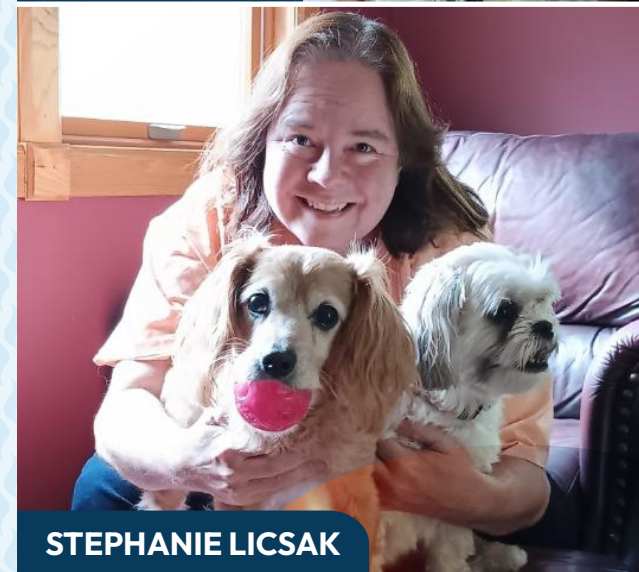
BETH KUPCHO



LISA STANGER



SARAH DOMENA



STEPHANIE LICSAK



TAMARA SCHECHTER



TIBERIUS HALAI



Jewish Foundation of Greater New Haven  
360 Amity Road  
Woodbridge, CT 06525



<Addressee>  
<Address1>  
<Address2>  
<Address3>  
<City>, <State> <ZIP>